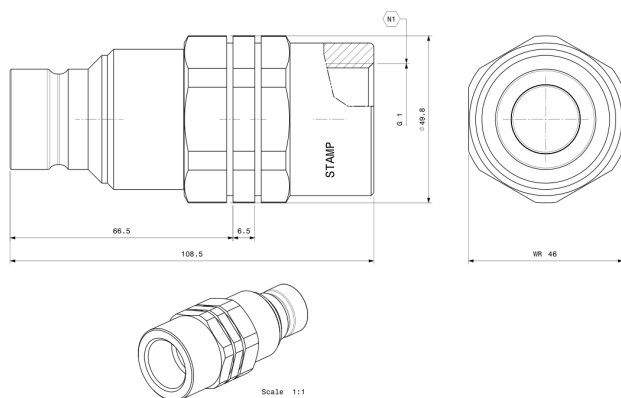


M APM17 BR6.5/66.5 1 BSP*

Codice articolo: 805100015 / Male / *Prodotto disponibile su richiesta



Body size 3/4"	Valving style Flat face
Interchange ISO 16028	Sealing Nitrile NBR
Connection system Push	Disconnection system Pull back the sleeve
Material Carbon steel	Treatment Cr3
Locking mechanism Locking ball	Disconnectable under pressure No
Thread FEMALE THREAD BSPP (ISO 1179-1)	Connectable under residual pressure Pressure in male side only
Temperature -20 / +100 °C; -4 / +212 °F	Applications Earth moving, Agriculture, Vehicles, Oil & Gas, Industry, Hydraulic Tools

Performance

IMPERIAL

ISO DN (mm)	19
Flow (gpm)	From 39,75 to 92,75
Max. Flow suggested (gpm)	5,3
Max. Operating pressure - coupled (psi)	4785
Operating pressure - uncoupled (psi)	4785
Burst pressure - coupled (psi)	14500
Burst pressure - uncoupled (psi)	17400
Connect force (lbf)	58,5
Disconnect force (lbf)	18
Spillage (ml)	0.18

Dimensions

IMPERIAL

Port (A)	1"
Length (in)	4,27
Max. diameter (in)	1,96
Weight (lb)	1,65

Related products

Product code	Type	Product name
805100014	Femmina	F A17 BR6.5/77.7 1 BSP

Spare kits

Product code	Product name
815700343	SPARE KIT OR NBR+BK M FF 34

Caps

Product code	Product name
815100013	PLASTIC CAP M FF34 RED
816005011	ALUMINUM CAP M FF34 NATURAL
815103013	PLASTIC CAP M FF34 BLACK **
815102013	PLASTIC CAP M FF34 BLUE **
815104013	PLASTIC CAP M FF34 GREEN **
815110031	PLASTIC CAP M FF34 MAGENTA **
815107031	PLASTIC CAP M FF34 ORANGE **
815105013	PLASTIC CAP M FF34 WHITE **
815101013	PLASTIC CAP M FF34 YELLOW **

**Product available upon request