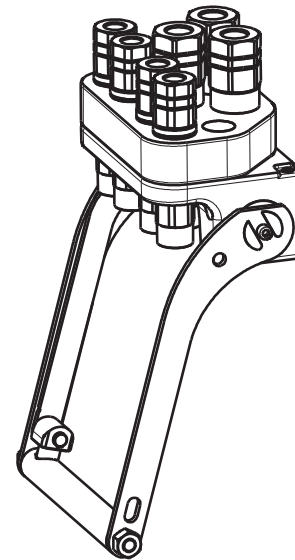
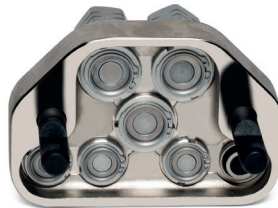


GR7 4A-3B-4EC

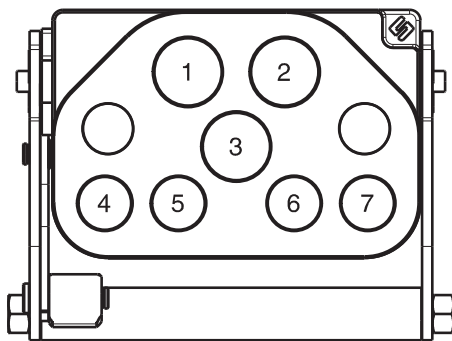
Previous description	Max. Resistance Body size	FAP9 (A) 3/8"	FAP13 (B) 1/2"	FAP15 (C) 5/8"	FAP17 (D) 3/4"	FAP21 (E) 1"	FAP30 (G) 1-1/2"
GR7ABZN	23000 N	4	D	3			



DRAWING



CONFIGURATIONS



Pos	Possible configurations	
	Coupling size	Predisposition for electrical connector
1	FAP13ZN	-
2	FAP13ZN	-
3	FAP13ZN	-
4	FAP9DZN	YES
5	FAP9DZN	YES
6	FAP9DZN	YES
7	FAP9DZN	YES

MultiCoupling (couplings included)		
Code	Name	Description
870015085	MULTI COMPLETE GR7 2B-3EC	2 FAP13 1/2 BSP - 3EC6 - CAP
870016148	MULTI FIX GR7 2A-3B-2EC	2 FAP9D 1/2 BSP - 3 FAP13 1/2 BSP - 2EC6
870015153	MULTI FIX GR7 1A-2B-3EC	1 FAP9D 3/8 BSP - 2 FAP13 3/4 BSP - 3EC6
870015154	MULTI FIX GR7 3B-3EC	3 FAP13 1/2 BSP - 3EC6
870015185	MULTI FIX GR7 2B-3EC	2 FAP13 1/2 BSP - 3EC6
870015171	MULTI FIX GR7 3A-3B V01*	1 FAP9D 3/8 BSP - 2 FAP9D 3/8 BSP - 3 FAP13 1/2 BSP
870016248	MULTI MOBILE GR7 2A-3B-2EC	2 FAP9D 1/2 BSP - 3 FAP13 1/2 BSP - 2EC6
870015253	MULTI MOBILE GR7 1A-2B-3EC	1 FAP9D 3/8 BSP - 2 FAP13 3/4 BSP - 3EC6
870015254	MULTI MOBILE GR7 3B-3EC	3 FAP13 1/2 BSP - 3EC6
870015285	MULTI MOBILE GR7 2B-3EC	2 FAP13 1/2 BSP - 3EC6
870015271	MULTI MOBILE GR7 3A-3B V01*	1 FAP9D 3/8 BSP - 2 FAP9D 3/8 BSP - 3 FAP13 1/2 BSP

* V01 = lever length

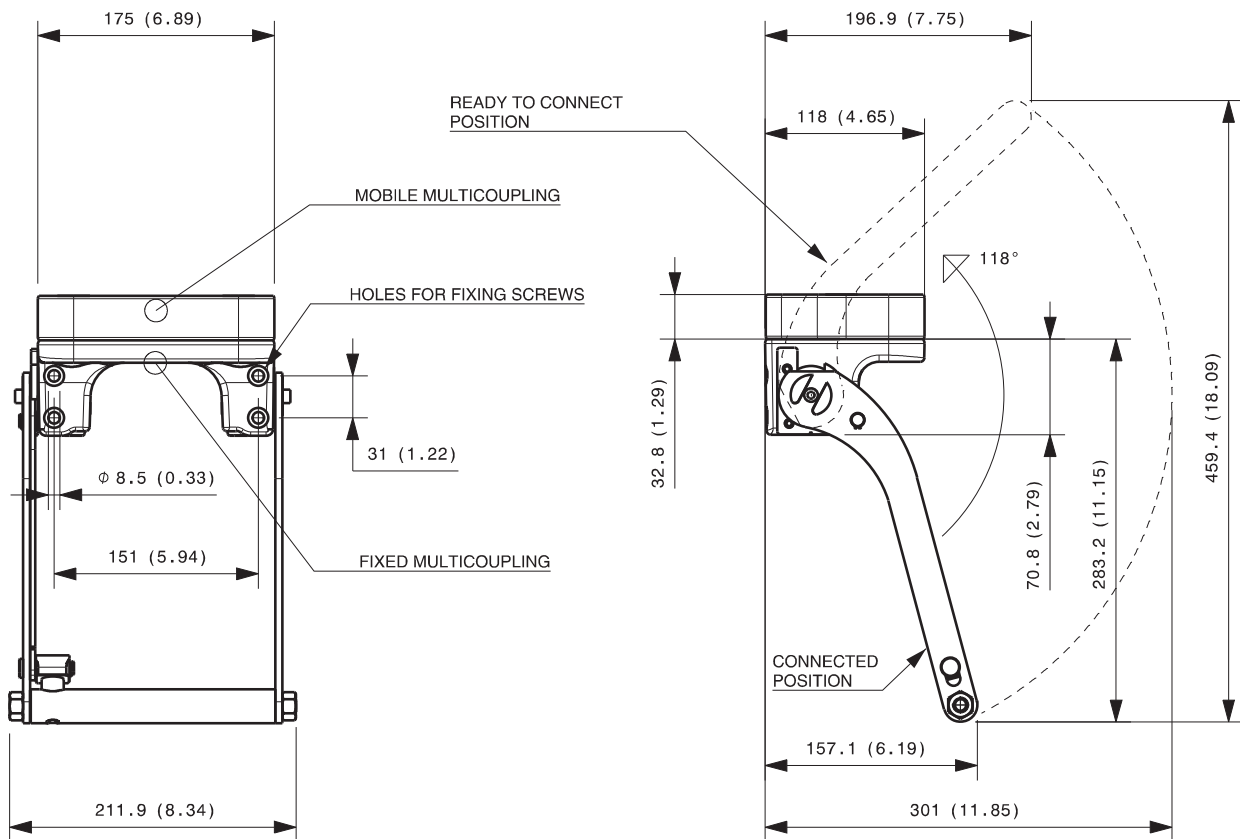
MultiCoupling spare parts (couplings not included)	
Code	Name
806000328	MULTI FIX EMPTY GR7 4A-3B-4EC
806000380	MULTI FIX EMPTY GR7 4A-3B-4EC V01*
806000329	MULTI MOBILE EMPTY GR7 4A-3B-4EC
815606260	CAP FIX MULTICOUPLING GR 175x117 V02
815606261	PARKING STATION MOBILE MULTICOUPLING GR 180x120 V02
815701055	SPARE KIT LEVER GROUP GR 250x212
UPON REQUEST	SPECIFIC KIT FOR V01 MODEL

* V01 = lever length

Custom configurations
available upon request

Fixed and mobile multicoupling

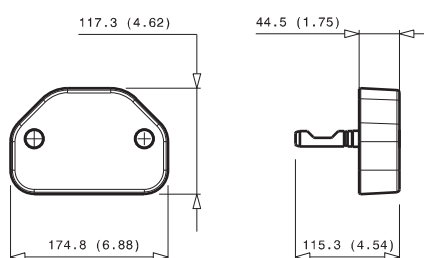
5,7 Kg and 2,9 Kg



Available also model with shorter lever,
in case of need ask the drawing to info@stucchi.it

Dimensions in millimeters (inch)

Cap for fixed multicoupling 1,2 Kg



Parking station for mobile multicoupling 2,4 Kg

