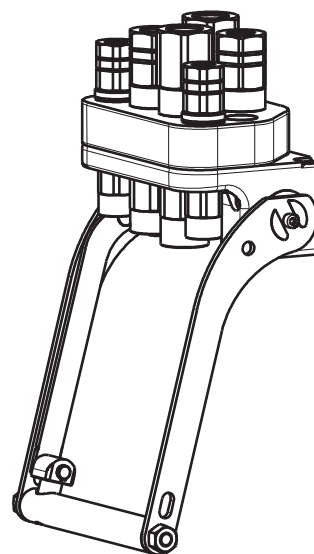
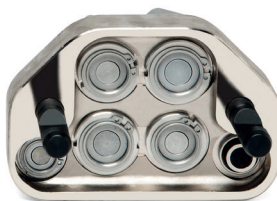


GR6 2A-2B-2C-2EC

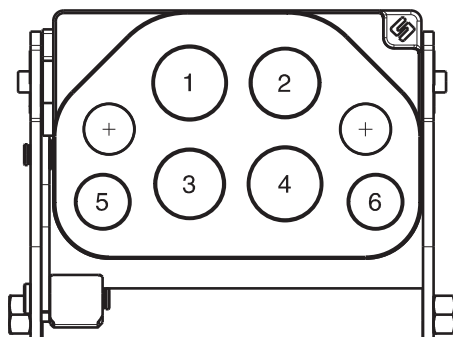
Previous description	Max. Resistance Body size	FAP9 (A) 3/8"	FAP13 (B) 1/2"	FAP15 (C) 5/8"	FAP17 (D) 3/4"	FAP21 (E) 1"	FAP30 (G) 1-1/2"
GRM6MCZN	23000 N	2 D	2	2			



DRAWING



CONFIGURATIONS



Possible configurations		
Pos	Coupling size	Predisposition for electrical connector
1	FAP15ZN	-
2	FAP13ZN	-
3	FAP13ZN	-
4	FAP15ZN	-
5	FAP9DZN	YES
6	FAP9DZN	YES

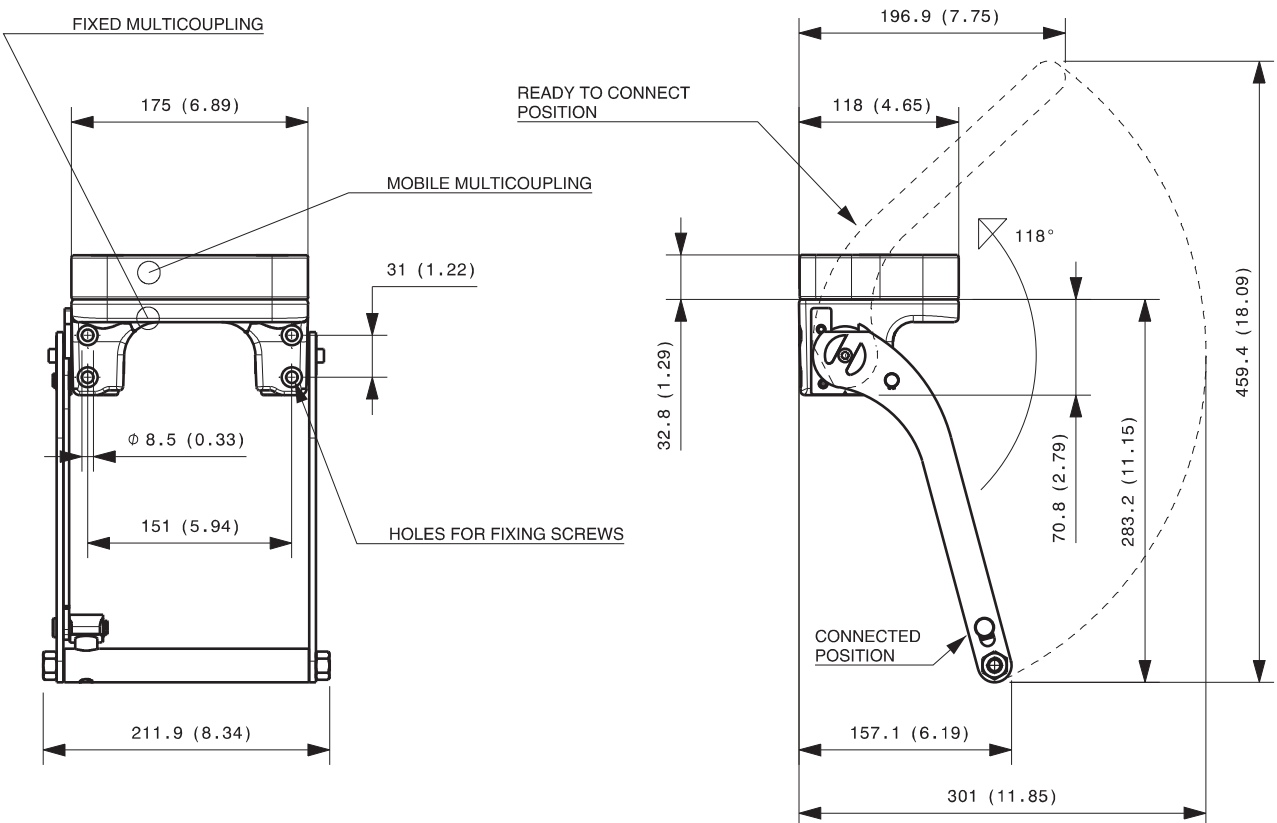
MultiCoupling (couplings included)		
Code	Name	Description
870016016	MULTI COMPLETE GR6 2A-2B-2C	2 FAP9D 3/8 BSP - 2 FAP13 1/2 BSP - 2 FAP15 3/4 BSP - CAP
870016028	MULTI COMPLETE GR6 1A-2B-2C	1 FAP9D 3/8 BSP - 2 FAP13 1/2 BSP - 2 FAP15 3/4 BSP - CAP
870016116	MULTI FIX GR6 2A-2B-2C	2 FAP9D 3/8 BSP - 2 FAP13 1/2 BSP - 2 FAP15 3/4 BSP
870016128	MULTI FIX GR6 1A-2B-2C	1 FAP9D 3/8 BSP - 2 FAP13 1/2 BSP - 2 FAP15 3/4 BSP
870016135	MULTI FIX GR6 1A-2B-2C	1 FAP9D 1/2 BSP - 2 FAP13 1/2 BSP - 2 FAP15 3/4 BSP
870016216	MULTI MOBILE GR6 2A-2B-2C	2 FAP9D 3/8 BSP - 2 FAP13 1/2 BSP - 2 FAP15 3/4 BSP
870016228	MULTI MOBILE GR6 1A-2B-2C	1 FAP9D 3/8 BSP - 2 FAP13 1/2 BSP - 2 FAP15 3/4 BSP
870016235	MULTI MOBILE GR6 1A-2B-2C	1 FAP9D 1/2 BSP - 2 FAP13 1/2 BSP - 2 FAP15 3/4 BSP

MultiCoupling spare parts (couplings not included)	
Code	Name
806000318	MULTI FIX EMPTY GR6 2A-2B-2C-2EC
806000319	MULTI MOBILE EMPTY GR6 2A-2B-2C-2EC
815606260	CAP FIX MULTICOUPLING GR 175x117 V02
815606261	PARKING STATION MOBILE MULTICOUPLING GR 180x120 V02
815701055	SPARE KIT LEVER GROUP GR 250x212

Custom configurations available upon request

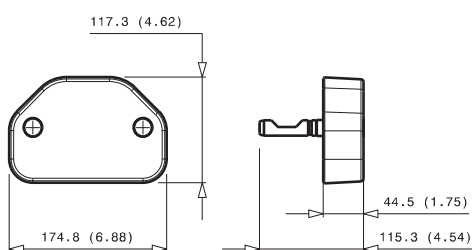
Fixed and mobile multicoupling

5,7 Kg and 2,9 Kg



Dimensions in millimeters (inch)

Cap for fixed multicoupling 1,2 Kg



Parking station for mobile multicoupling 2,4 Kg

