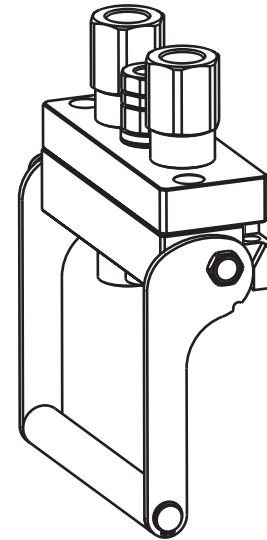


DP3 1A-2C-1EC V04

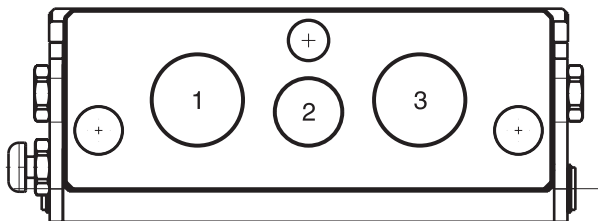
Previous description	Max. Resistance	FAP9 (A)	FAP13 (B)	FAP15 (C)	FAP17 (D)	FAP21 (E)	FAP30 (G)
Body size	10000 N	3/8"	1/2"	5/8"	3/4"	1"	1-1/2"
		1	D	2			



DRAWING



CONFIGURATIONS



Possible configurations		
Pos	Coupling size	Predisposition for electrical connector
1	FAP15	-
2	FAP9-D	YES
3	FAP15	-

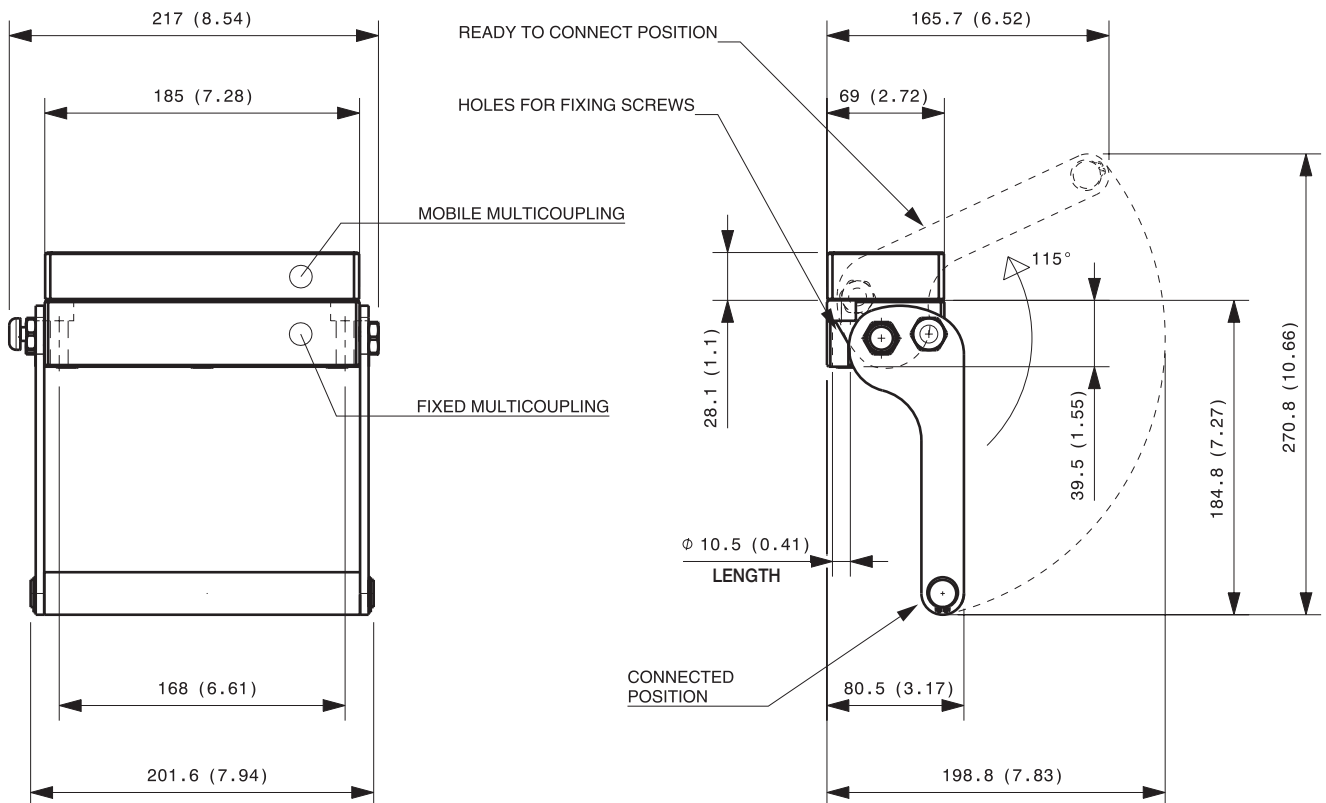
MultiCoupling (couplings included)		
Code	Name	Description
870008027	MULTI COMPLETE DP3 1A-2C V04	1 FAP9D 3/8 BSP - 2 FAP15 3/4 BSP - CAP
870008127	MULTI FIX DP3 1A-2C V04	1 FAP9D 3/8 BSP - 2 FAP15 3/4 BSP
870008130	MULTI FIX DP3 1A-2C V04	1 FAP9D 1/2 BSP - 2 FAP15 3/4 BSP
870008227	MULTI MOBILE DP3 1A-2C V04	1 FAP9D 3/8 BSP - 2 FAP15 3/4 BSP
870008230	MULTI MOBILE DP3 1A-2C V04	1 FAP9D 1/2 BSP - 2 FAP15 3/4 BSP

MultiCoupling spare parts (couplings not included)	
Code	Name
806000416	MULTI FIX EMPTY DP3 1A-2C-1EC V04
806000417	MULTI MOBILE EMPTY DP3 1A-2C-1EC V04
815606314	CAP FIX MULTICOUPLING DP 185x69
815606315	PARKING STATION MOBILE MULTICOUPLING DP 185x69

Custom configurations available upon request

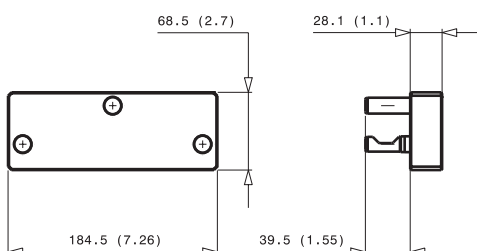
Fixed and mobile multicoupling

2,3 Kg and 0,9 Kg



Dimensions in millimeters (inch)

Cap for fixed multicoupling 0,9 Kg



Parking station for mobile multicoupling 3,3 Kg

