

# DP2 2B-1EC

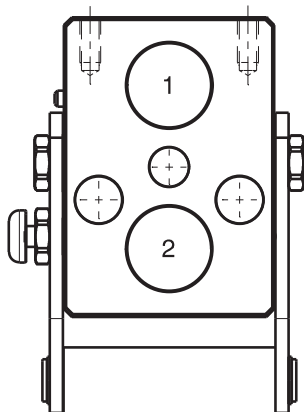
Previous description	Max. Resistance Body size	FAP9 (A) 3/8"	FAP13 (B) 1/2"	FAP15 (C) 5/8"	FAP17 (D) 3/4"	FAP21 (E) 1"	FAP30 (G) 1-1/2"
DP2-13ZN	12000 N		2				



## DRAWING



## CONFIGURATIONS



Possible configurations		
Pos	Coupling size	Predisposition for electrical connector
1	FAP13ZN	YES
2	FAP13ZN	-

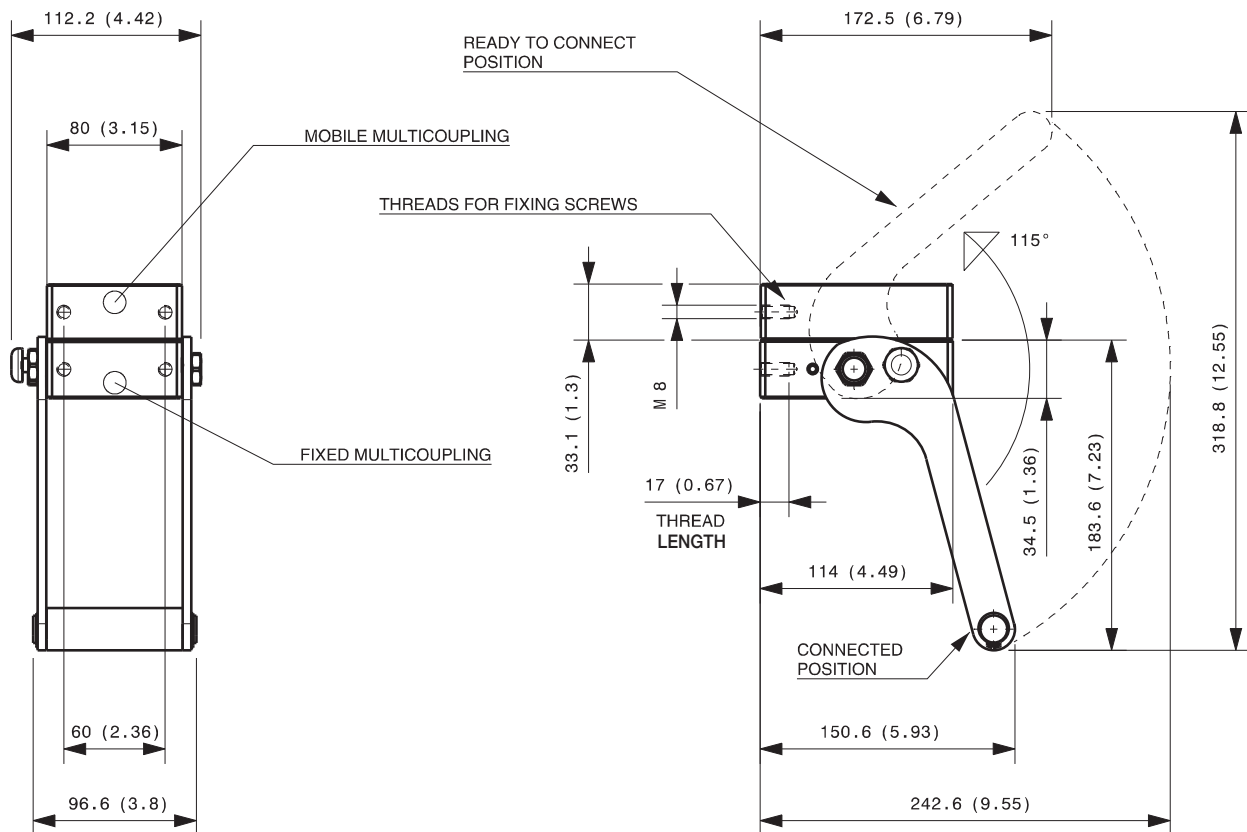
MultiCoupling (couplings included)		
Code	Name	Description
870008016	MULTI COMPLETE DP2 2B	2 FAP13 3/4 BSP - CAP
870008019	MULTI COMPLETE DP2 2B	2 FAP13 1/2 BSP - CAP
870008119	MULTI FIX DP2 2B	2 FAP13 1/2 BSP
870008219	MULTI MOBILE DP2 2B	2 FAP13 1/2 BSP
870008216	MULTI MOBILE DP2 2B	2 FAP13 3/4 BSP

MultiCoupling spare parts (couplings not included)	
Code	Name
806000346	MULTI FIX EMPTY DP2 2B-1EC
806000347	MULTI MOBILE EMPTY DP2 2B-1EC
815606270	CAP FIX MULTICOUPLING DP 114x80
815606271	PARKING STATION MOBILE MULTICOUPLING DP 114x80
815701082	SPARE KIT LEVER GROUP DP 170x97

Custom configurations available upon request

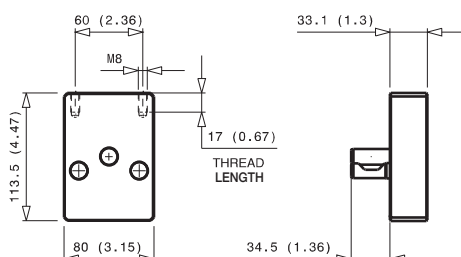
## Fixed and mobile multicoupling

1,6 Kg and 0,8 Kg



Dimensions in millimeters (inch)

### Cap for fixed multicoupling 0,8 Kg



### Parking station for mobile multicoupling 0,8 Kg

