

# DP2 2A-1EC

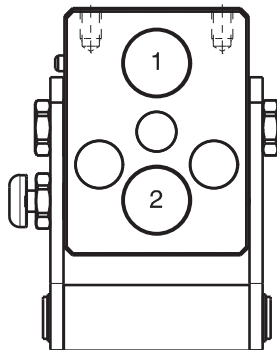
Previous description	Max. Resistance	FAP9 (A)	FAP13 (B)	FAP15 (C)	FAP17 (D)	FAP21 (E)	FAP30 (G)
Body size		3/8"	1/2"	5/8"	3/4"	1"	1-1/2"
DP2-9ZN	8000 N	2	A				



## DRAWING



## CONFIGURATIONS



Possible configurations		
Pos	Coupling size	Predisposition for electrical connector
1	FAP9AZN	YES
2	FAP9AZN	-

MultiCoupling (couplings included)		
Code	Name	Description
870007015	MULTI COMPLETE DP2 2A	2 FAP9A 1/2 BSP - CAP
870007016	MULTI COMPLETE DP2 2A	2 FAP9A 3/8 BSP - CAP
870007017	MULTI COMPLETE DP2 2A	2 FAP9A L15 - CAP
870007115	MULTI FIX DP2 2A	2 FAP9A 1/2 BSP
870007116	MULTI FIX DP2 2A	2 FAP9A 3/8 BSP
870007215	MULTI MOBILE DP2 2A	2 FAP9A 1/2 BSP
870007216	MULTI MOBILE DP2 2A	2 FAP9A 3/8 BSP

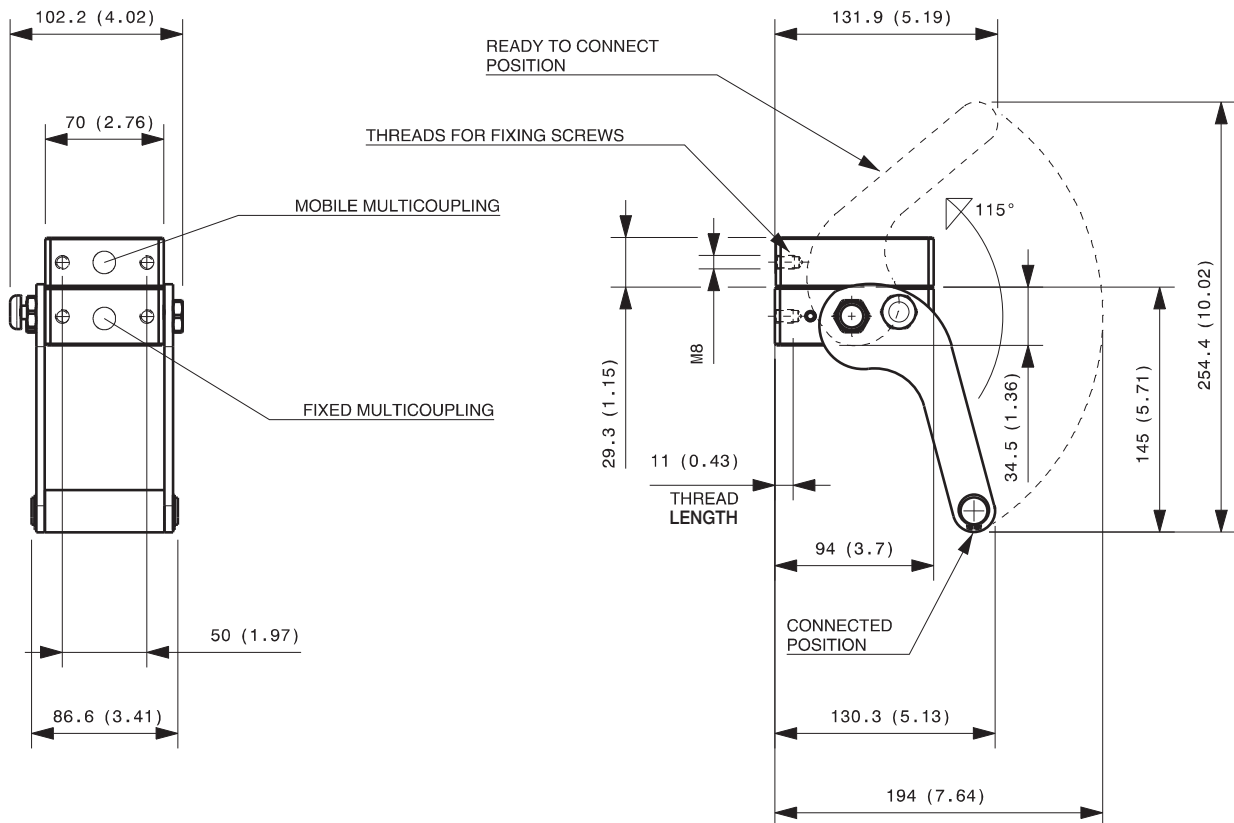
MultiCoupling spare parts (couplings not included)	
Code	Name
806000344	MULTI FIX EMPTY DP2 2A-1EC
806000345	MULTI MOBILE EMPTY DP2 2A-1EC
815606266	CAP FIX MULTICOUPLING DP 94x70
815606267	PARKING STATION MOBILE MULTICOUPLING DP 94x70
815701083	SPARE KIT LEVER GROUP DP 130x87

Custom configurations available upon request

## Fixed and mobile multicoupling

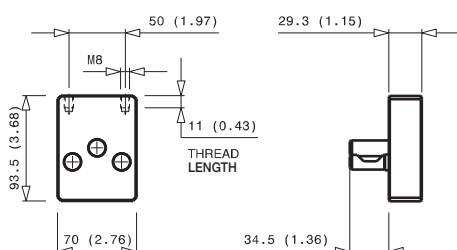
1,3 Kg and 0,6 Kg

DP



Dimensions in millimeters (inch)

### Cap for fixed multicoupling 0,5 Kg



### Parking station for mobile multicoupling 0,6 Kg

