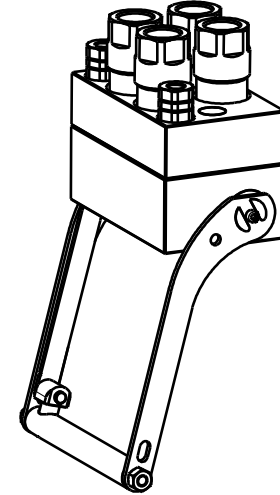


DP6 2A-4D-2EC

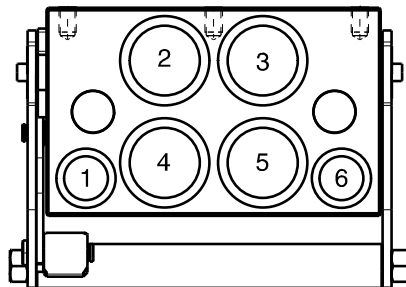
Previous description	Max. Resistance	FAP9 (A)	FAP13 (B)	FAP15 (C)	FAP17 (D)	FAP21 (E)	FAP30 (G)
Body size		3/8"	1/2"	5/8"	3/4"	1"	1-1/2"
DP6AD	23000 N	2	D		4		



DRAWING



CONFIGURATIONS



↑
Button
on the lever

Possible configurations		
Pos	Coupling size	Predisposition for electrical connector
1	FAP9DZN	YES *
2	FAP17ZN	-
3	FAP17ZN	-
4	FAP17ZN	-
5	FAP17ZN	-
6	FAP9DZN	YES *

* - Maximum hose diameter for FAP9: Ø16 (1.33),
in case of bigger hose use a longer adaptor.

MultiCoupling (couplings included)

Code	Name	Description
870008023	MULTI COMPLETE DP6 2A-4D	2 FAP9D 3/8 BSP - 4 FAP17 1 BSP - CAP
870008028	MULTI COMPLETE DP6 4D	4 FAP17 1 BSP - CAP
870008123	MULTI FIX DP6 2A-4D	2 FAP9D 3/8 BSP - 4 FAP17 1 BSP
870008223	MULTI MOBILE DP6 2A-4D	2 FAP9D 3/8 BSP - 4 FAP17 1 BSP

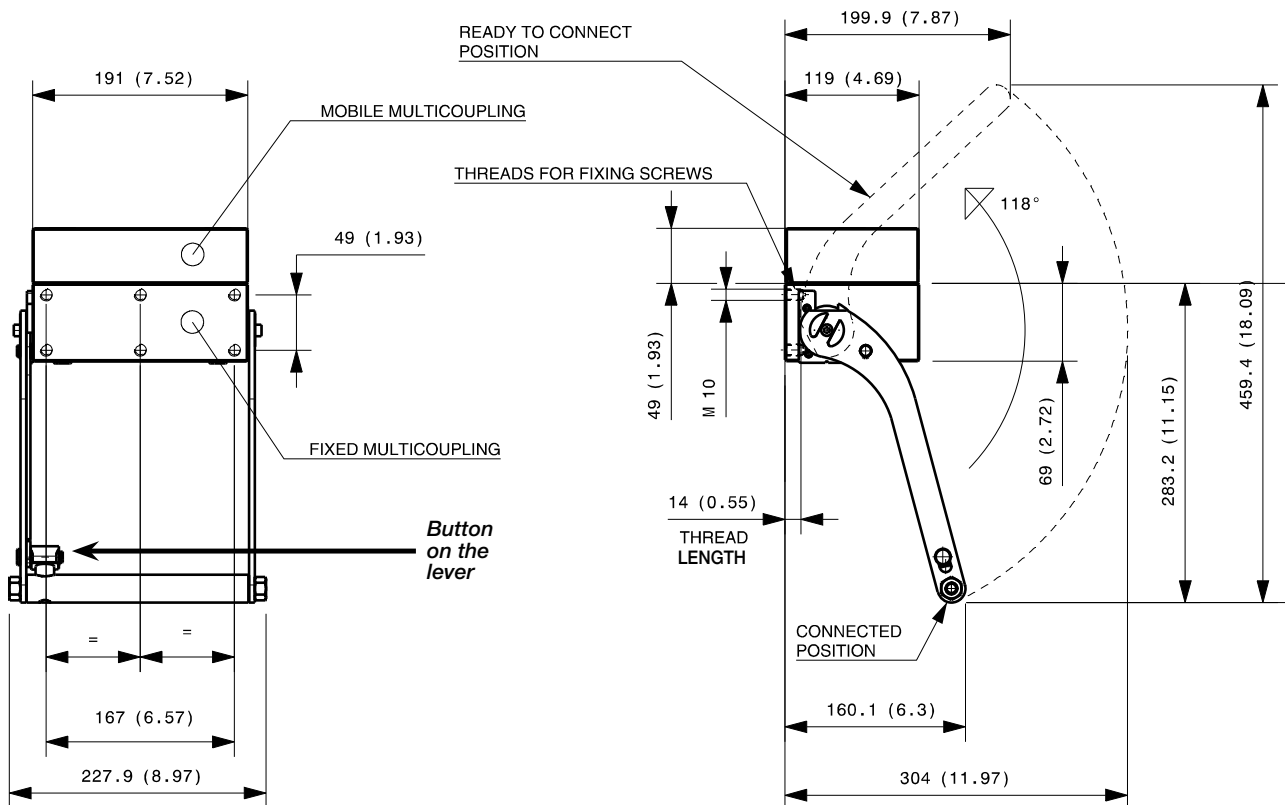
MultiCoupling spare parts (couplings not included)

Code	Name
806000382	MULTI FIX EMPTY DP6 2A-4D-2EC
806000383	MULTI MOBILE EMPTY DP6 2A-4D-2EC
815606290	CAP FIX MULTICOUPLING DP 191x118
815606291	PARKING STATION MOBILE MULTICOUPLING DP 190x120
815701089	SPARE KIT LEVER GROUP DP 250x228

Custom configurations
available upon request

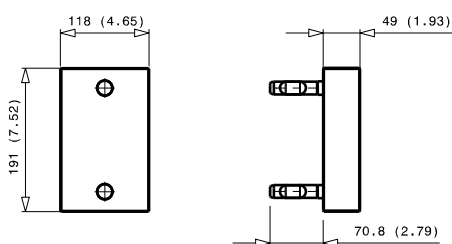
Fixed and mobile multicoupling

4,5 Kg and 2,2 Kg



Dimensions in millimeters (inch)

Cap for fixed multicoupling 2,8 Kg



Parking station for mobile multicoupling 2,5 Kg

