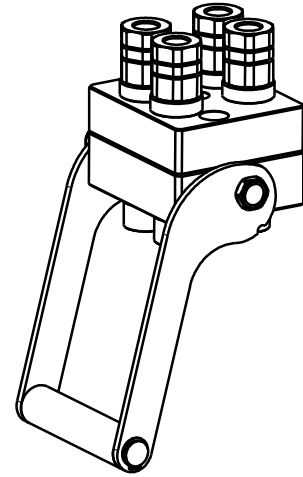


DP4 4A-2EC

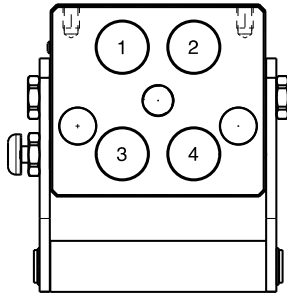
Previous description	Max. Resistance	FAP9 (A)	FAP13 (B)	FAP15 (C)	FAP17 (D)	FAP21 (E)	FAP30 (G)
Body size		3/8"	1/2"	5/8"	3/4"	1"	1-1/2"
DP4-9ZN	17000 N	2	A				



DRAWING



CONFIGURATIONS



Pos	Possible configurations	
	Coupling size	Predisposition for electrical connector
1	FAP9AZN	-
2	FAP9AZN	YES
3	FAP9AZN	YES
4	FAP9AZN	-

MultiCoupling (couplings included)

Code	Name	Description
870011017	MULTI COMPLETE DP4 4A	4 FAP9A 3/8 BSP - CAP
870011020	MULTI COMPLETE DP4 4A	4 FAP9A 1/2 BSP - CAP
870011022	MULTI COMPLETE DP4 4A	4 FAP9A 1/4 BSP - CAP
870011027	MULTI COMPLETE DP4 4A	4 FAQ9A 3/8 BSP - CAP
870011028	MULTI COMPLETE DP4 4A	4 FAP9A 3/8 SAE - CAP
870011029	MULTI COMPLETE DP4 4A	4 FAP9A 1/2 NPT - CAP
870011117	MULTI FIX DP4 4A	4 FAP9A 3/8 BSP
870011120	MULTI FIX DP4 4A	4 FAP9A 1/2 BSP
870011122	MULTI FIX DP4 4A	4 FAP9A 1/4 BSP
870011125	MULTI FIX DP4 2A	2 FAP9A 3/8 BSP
870011126	MULTI FIX DP4 4A	4 FAP9A 1/2 SAE
870011217	MULTI MOBILE DP4 4A	4 FAP9A 3/8 BSP
870011220	MULTI MOBILE DP4 4A	4 FAP9A 1/2 BSP
870011222	MULTI MOBILE DP4 4A	4 FAP9A 1/4 BSP

* V02 = side button

MultiCoupling spare parts (couplings not included)

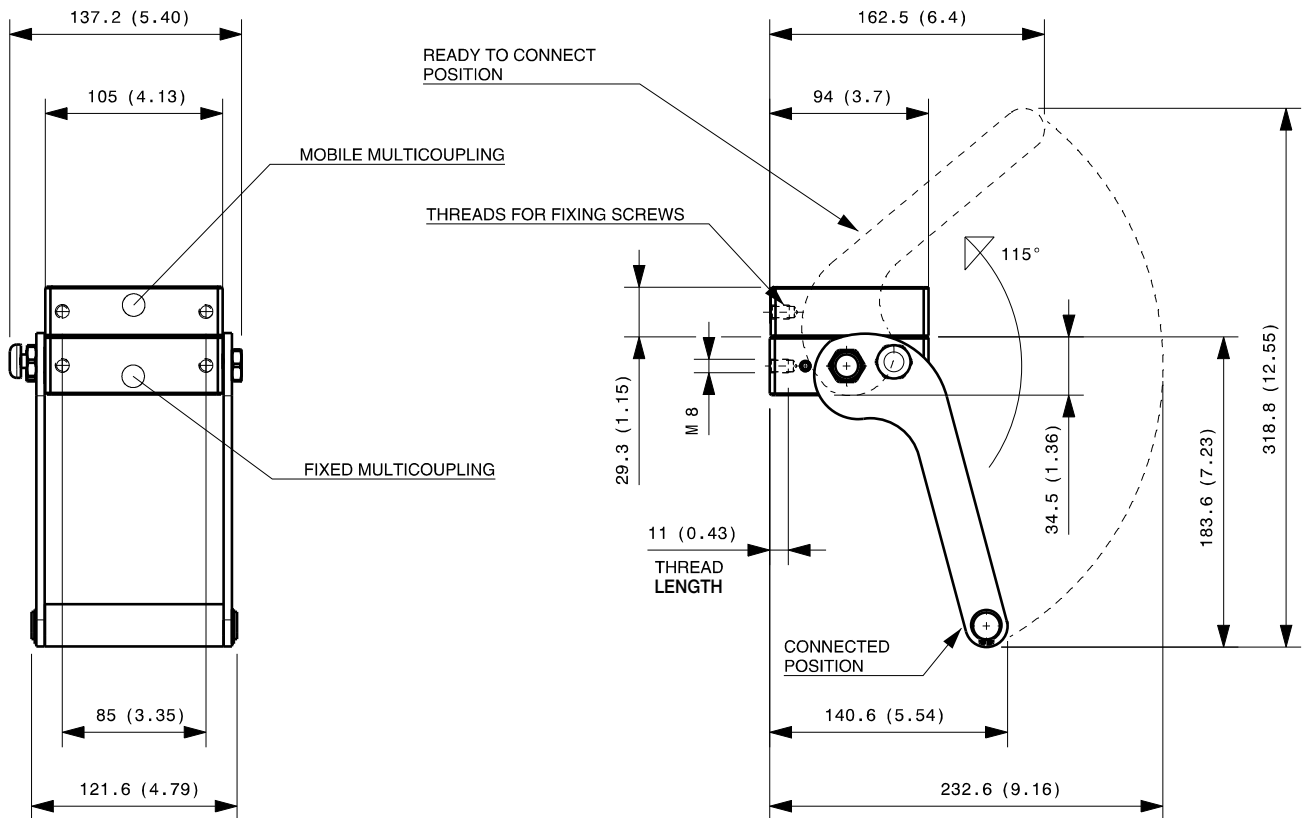
Code	Name
806000264	MULTI FIX EMPTY DP4 4A-2EC
806000370	MULTI FIX EMPTY DP4 4A V02*
806000265	MULTI MOBILE EMPTY DP4 4A-2EC
815606280	CAP FIX MULTICOUPLING DP 105x94
815606281	PARKING STATION MOBILE MULTICOUPLING DP 105x94
815701081	SPARE KIT LEVER GROUP DP 170x121
UPON REQUEST	SPECIFIC KIT FOR V02 MODEL

* V02 = side button

Custom configurations
available upon request

Fixed and mobile multicoupling

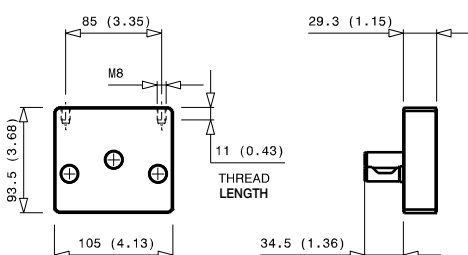
1,7 Kg and 0,7 Kg



Available also model with button in other side, in case of need ask the drawing to info@stucchi.it

Dimensions in millimeters (inch)

Cap for fixed multicoupling 0,7 Kg



Parking station for mobile multicoupling 0,9 Kg

