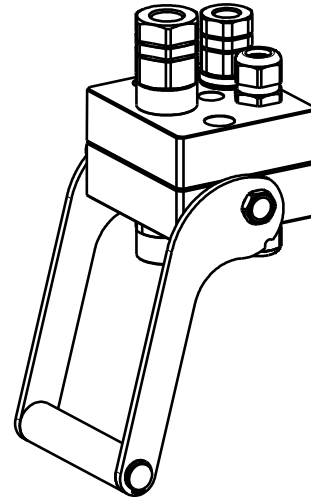


DP3 1A-1B-1EC

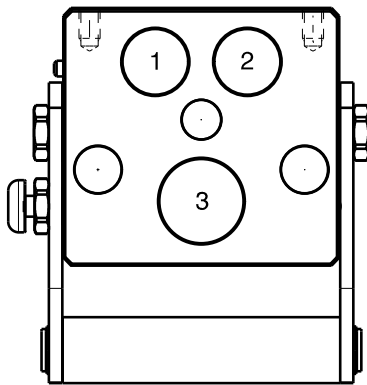
Previous description	Max. Resistance	FAP9 (A)	FAP13 (B)	FAP15 (C)	FAP17 (D)	FAP21 (E)	FAP30 (G)
Body size		3/8"	1/2"	5/8"	3/4"	1"	1-1/2"
DPT3ZN	10000 N	1 D	1				



DRAWING



CONFIGURATIONS



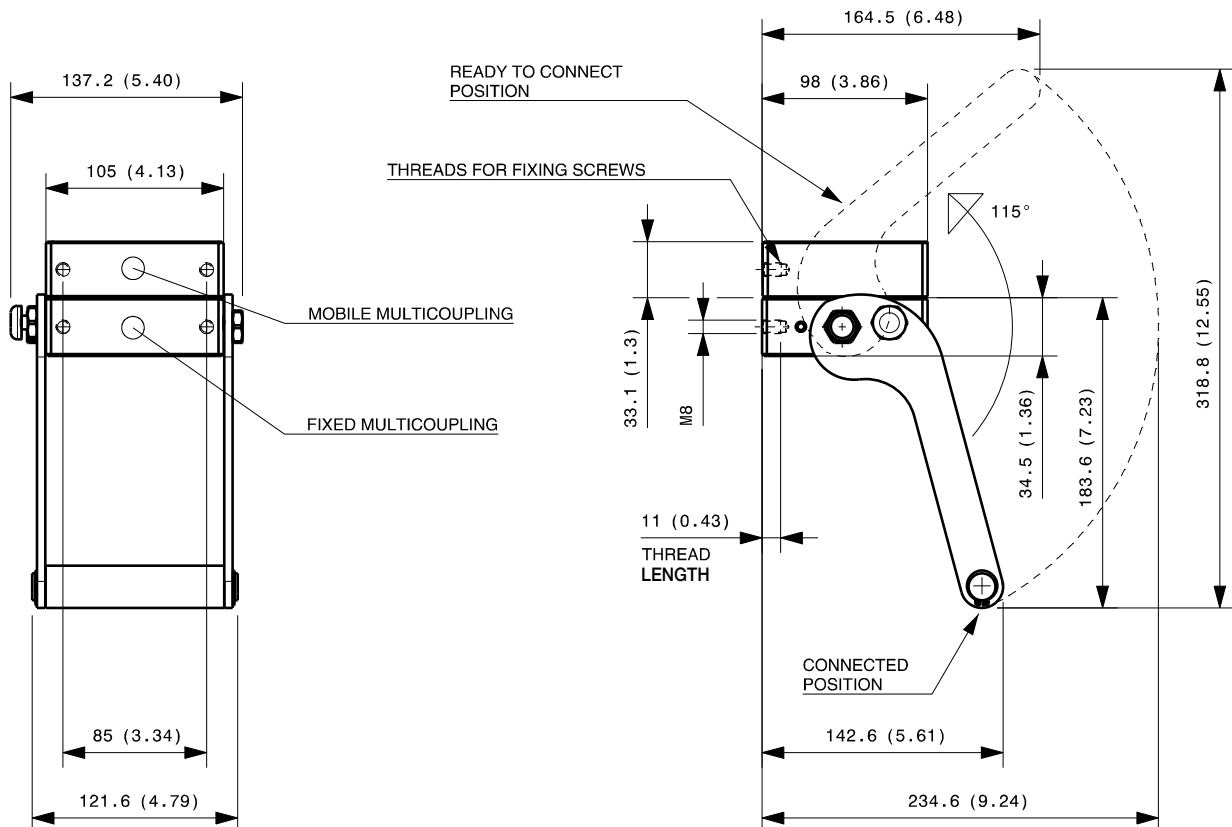
Possible configurations		
Pos	Coupling size	Predisposition for electrical connector
1	FAP9DZN	-
2	-	YES
3	FAP13ZN	-

MultiCoupling (couplings included)		
Code	Name	Description
870009015	MULTI COMPLETE DP3 1A-1B-1EC	1 FAP9D 3/8 BSP - 1 FAP13 1/2 BSP - 1EC4 - CAP
870009115	MULTI FIX DP3 1A-1B-1EC	1 FAP9D 3/8 BSP - 1 FAP13 1/2 BSP - 1EC4
870009215	MULTI MOBILE DP3 1A-1B-1EC	1 FAP9D 3/8 BSP - 1 FAP13 1/2 BSP - 1EC4

MultiCoupling spare parts (couplings not included)	
Code	Name
806000356	MULTI FIX EMPTY DP3 1A-1B-1EC
806000357	MULTI MOBILE EMPTY DP3 1A-1B-1EC
815606276	CAP FIX MULTICOUPLING DP 105x98
815606277	PARKING STATION MOBILE MULTICOUPLING DP 105x98
815701081	SPARE KIT LEVER GROUP DP 170x121

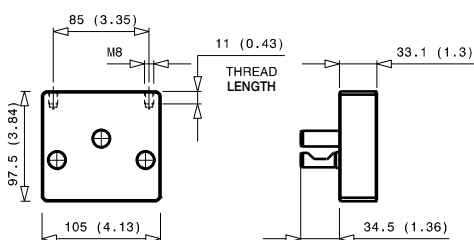
Fixed and mobile multicoupling

1,5 Kg and 0,8 Kg



Dimensions in millimeters (inch)

Cap for fixed multicoupling 0,8 Kg



Parking station for mobile multicoupling 3,3 Kg

