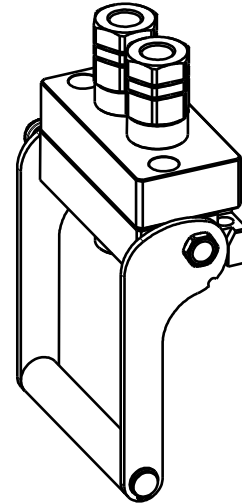


DP2 2B-2EC V04

Previous description	Max. Resistance Body size	FAP9 (A) 3/8"	FAP13 (B) 1/2"	FAP15 (C) 5/8"	FAP17 (D) 3/4"	FAP21 (E) 1"	FAP30 (G) 1-1/2"
DP2-13L	12000 N		2				

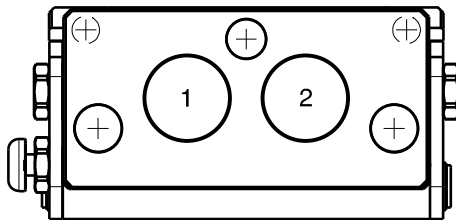


DRAWING



CONFIGURATIONS

Possible configurations		
Pos	Coupling size	Predisposition for electrical connector
1	FAP13ZN	YES
2	FAP13ZN	YES



MultiCoupling (couplings included)		
Code	Name	Description
870008012	MULTI COMPLETE DP2 2B V04*	2 FAP13 1/2 BSP - CAP
870008112	MULTI FIX DP2 2B V04*	2 FAP13 1/2 BSP
870008121	MULTI FIX DP2 2B V05**	2 FAP13 3/4 BSP
870008212	MULTI MOBILE DP2 2B V04*	2 FAP13 1/2 BSP
870008221	MULTI MOBILE DP2 2B V04*	2 FAP13 3/4 BSP

* V04 = it differs from DP2 2B standard because is longitudinal and has a different angle lever (compact version)

** V05 = it differs from DP2 2B standard because is longitudinal

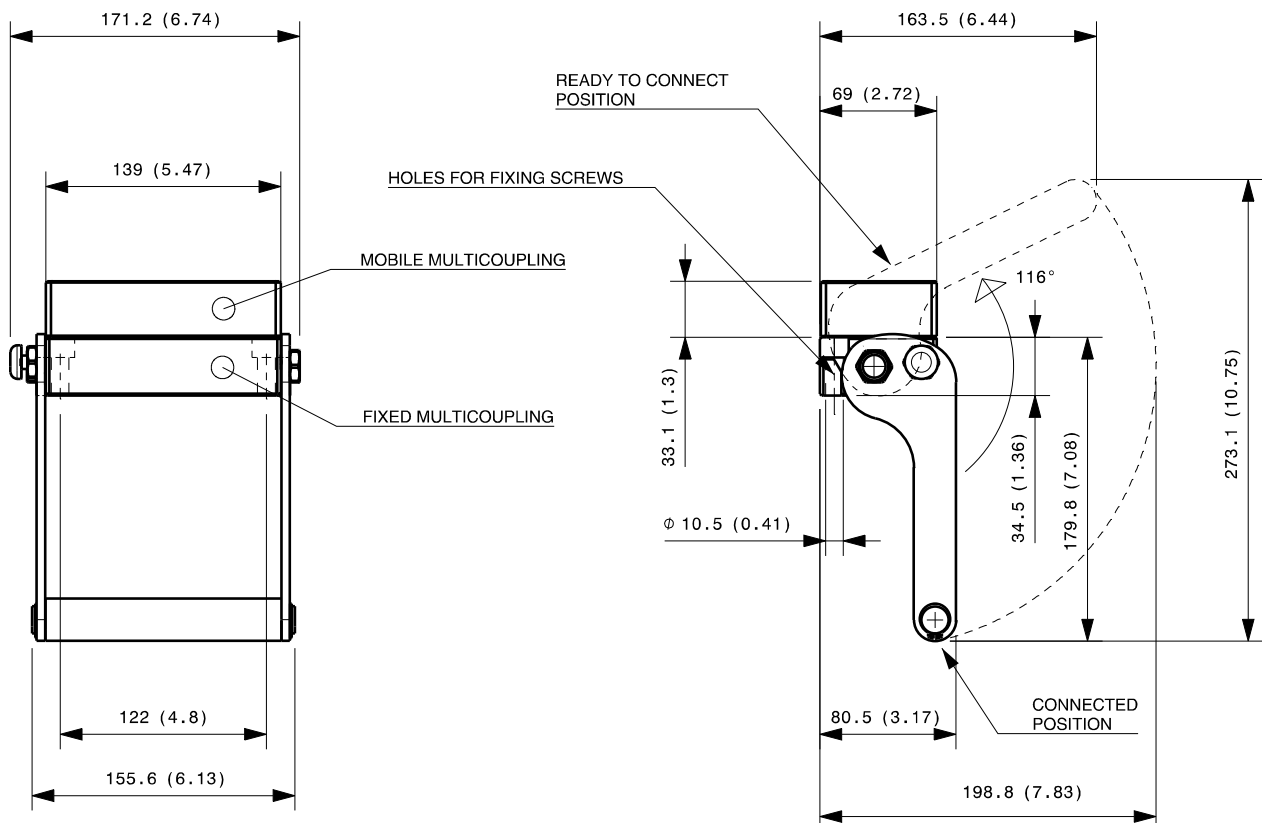
MultiCoupling spare parts (couplings not included)	
Code	Name
806000368	MULTI FIX EMPTY DP2 2B-2EC V04*
806000402	MULTI FIX EMPTY DP2 2B-2EC V05**
806000369	MULTI MOBILE EMPTY DP2 2B-2EC V04*
815606240	CAP FIX MULTICOUPLING DP 139x69
815606309	PARKING STATION MOBILE MULTICOUPLING DP 139x69
815701088	SPARE KIT LEVER GROUP DP 150x156

* V04 = it differs from DP2 2B standard because is longitudinal and has a different angle lever (compact version)

** V05 = it differs from DP2 2B standard because is longitudinal

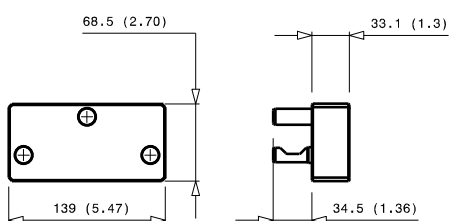
Fixed and mobile multicoupling

1,8 Kg and 0,8 Kg



Dimensions in millimeters (inch)

Cap for fixed multicoupling 0,8 Kg



Parking station for mobile multicoupling 0,8 Kg

