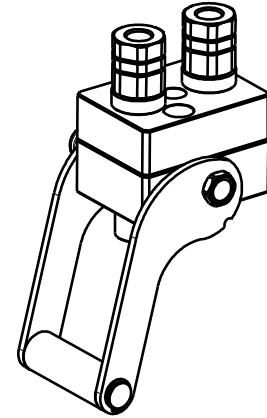


DP2 2A-1EC

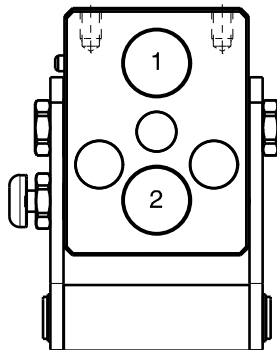
Previous description	Max. Resistance	FAP9 (A)	FAP13 (B)	FAP15 (C)	FAP17 (D)	FAP21 (E)	FAP30 (G)
Body size		3/8"	1/2"	5/8"	3/4"	1"	1-1/2"
DP2-9ZN	8000 N	2	A				



DRAWING



CONFIGURATIONS



Possible configurations		
Pos	Coupling size	Predisposition for electrical connector
1	FAP9AZN	YES
2	FAP9AZN	-

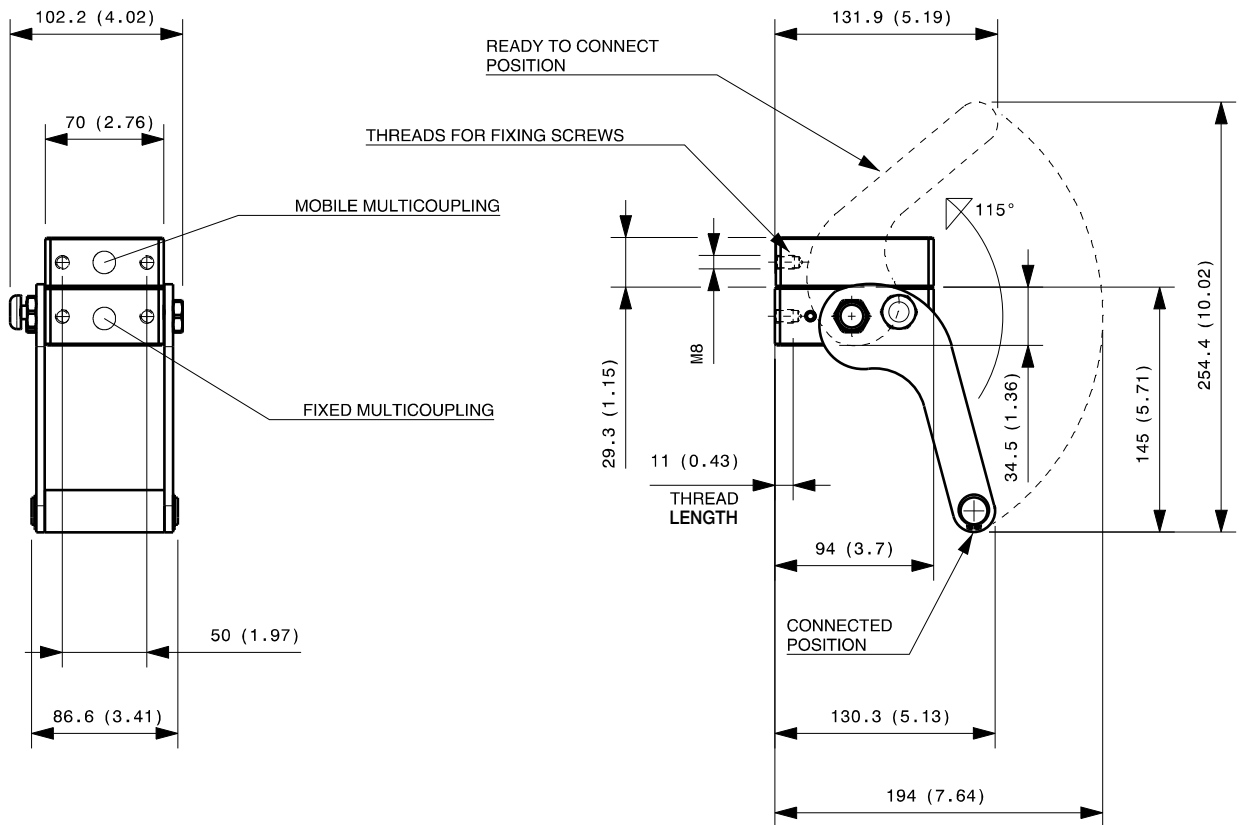
MultiCoupling (couplings included)		
Code	Name	Description
870007015	MULTI COMPLETE DP2 2A	2 FAP9A 1/2 BSP - CAP
870007016	MULTI COMPLETE DP2 2A	2 FAP9A 3/8 BSP - CAP
870007115	MULTI FIX DP2 2A	2 FAP9A 1/2 BSP
870007116	MULTI FIX DP2 2A	2 FAP9A 3/8 BSP
870007215	MULTI MOBILE DP2 2A	2 FAP9A 1/2 BSP
870007216	MULTI MOBILE DP2 2A	2 FAP9A 3/8 BSP

MultiCoupling spare parts (couplings not included)	
Code	Name
806000344	MULTI FIX EMPTY DP2 2A-1EC
806000345	MULTI MOBILE EMPTY DP2 2A-1EC
815606266	CAP FIX MULTICOUPLING DP 94x70
815606267	PARKING STATION MOBILE MULTICOUPLING DP 94x70
815701083	SPARE KIT LEVER GROUP DP 130x87

Custom configurations available upon request

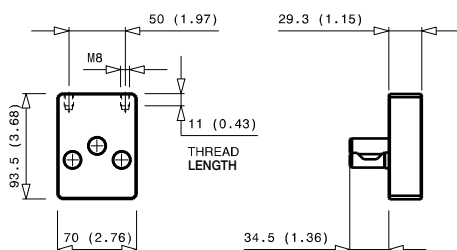
Fixed and mobile multicoupling

1,3 Kg and 0,6 Kg



Dimensions in millimeters (inch)

Cap for fixed multicoupling 0,5 Kg



Parking station for mobile multicoupling 0,6 Kg

