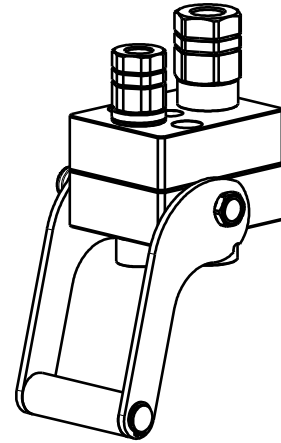


DP2 1A-1B

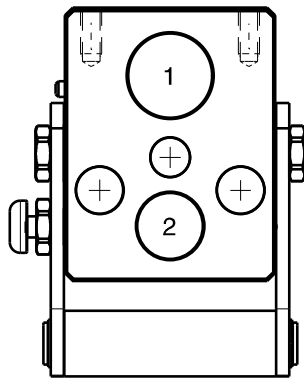
Previous description	Max. Resistance	FAP9 (A)	FAP13 (B)	FAP15 (C)	FAP17 (D)	FAP21 (E)	FAP30 (G)
Body size		3/8"	1/2"	5/8"	3/4"	1"	1-1/2"
DPT2ZN	10000 N	1 D	1				



DRAWING



CONFIGURATIONS



Possible configurations		
Pos	Coupling size	Predisposition for electrical connector
1	FAP13ZN	-
2	FAP9DZN	-

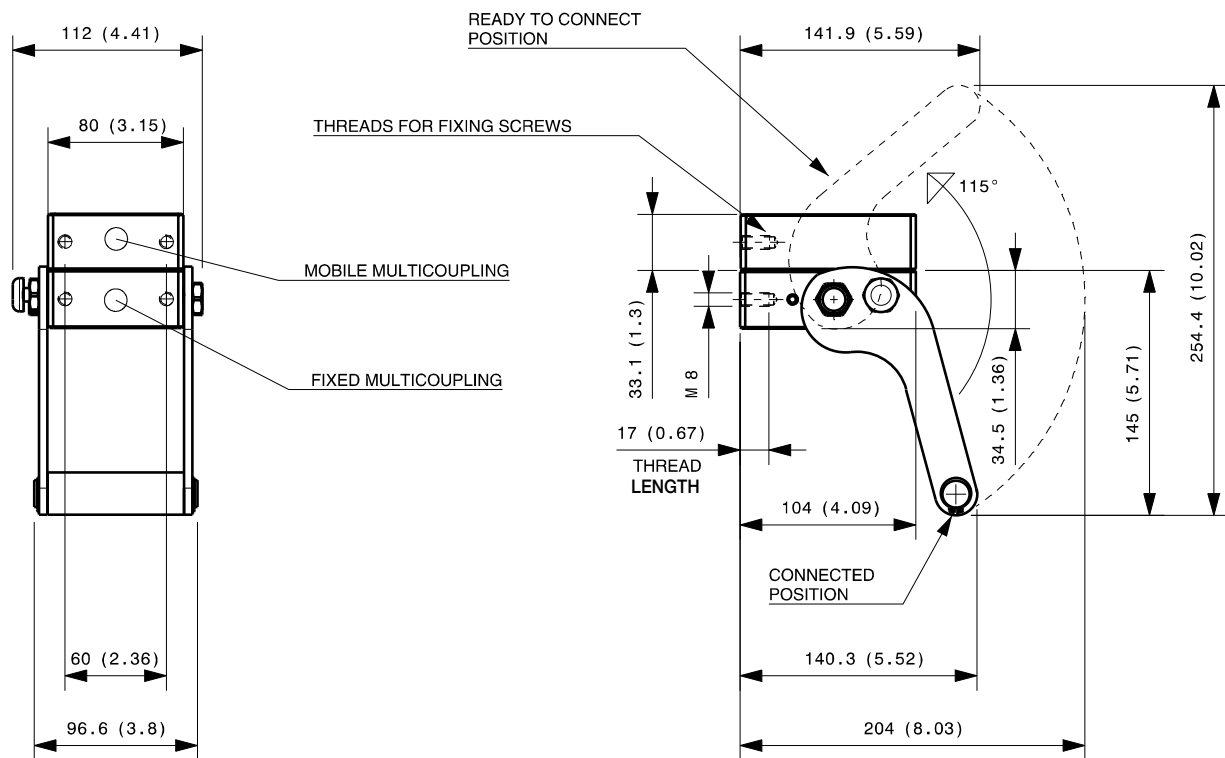
MultiCoupling (couplings included)		
Code	Name	Description
870009014	MULTI COMPLETE DP2 1A-1B	1 FAP9D 3/8 BSP - 1 FAP13 1/2 BSP - CAP
870009114	MULTI FIX DP2 1A-1B	1 FAP9D 3/8 BSP - 1 FAP13 1/2 BSP
870009214	MULTI MOBILE DP2 1A-1B	1 FAP9D 3/8 BSP - 1 FAP13 1/2 BSP

MultiCoupling spare parts (couplings not included)	
Code	Name
806000354	MULTI FIX EMPTY DP2 1A-1B
806000355	MULTI MOBILE EMPTY DP2 1A-1B
815606268	CAP FIX MULTICOUPLING DP 104x80
815606269	PARKING STATION MOBILE MULTICOUPLING DP 104x80
815701086	SPARE KIT LEVER GROUP DP 130x97

Custom configurations available upon request

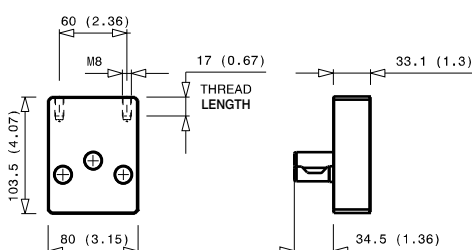
Fixed and mobile multicoupling

1,5 Kg and 0,8 Kg



Dimensions in millimeters (inch)

Cap for fixed multicoupling 0,8 Kg



Parking station for mobile multicoupling 0,8 Kg

