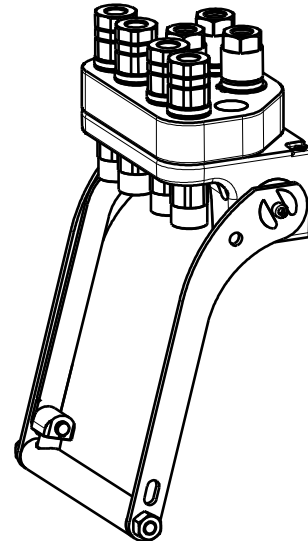


GRHP7 7A-4EC

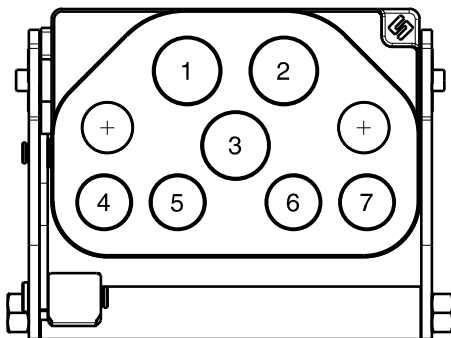
Previous description	Max. Resistance	FAP9 (A)	FAP13 (B)	FAP15 (C)	FAP17 (D)	FAP21 (E)	FAP30 (G)
Body size		3/8"	1/2"	5/8"	3/4"	1"	1-1/2"
GR7ACZN	30000 N	4 D					
		3 HP					



DRAWING



CONFIGURATIONS



Possible configurations			
Pos	Coupling size	Predisposition for electrical connector	Pression type
1	FAP9-HP	-	High
2	FAP9-HP	-	High
3	FAP9-HP	-	High
4	FAP9DZN	YES	Medium
5	FAP9DZN	YES	Medium
6	FAP9DZN	YES	Medium
7	FAP9DZN	YES	Medium

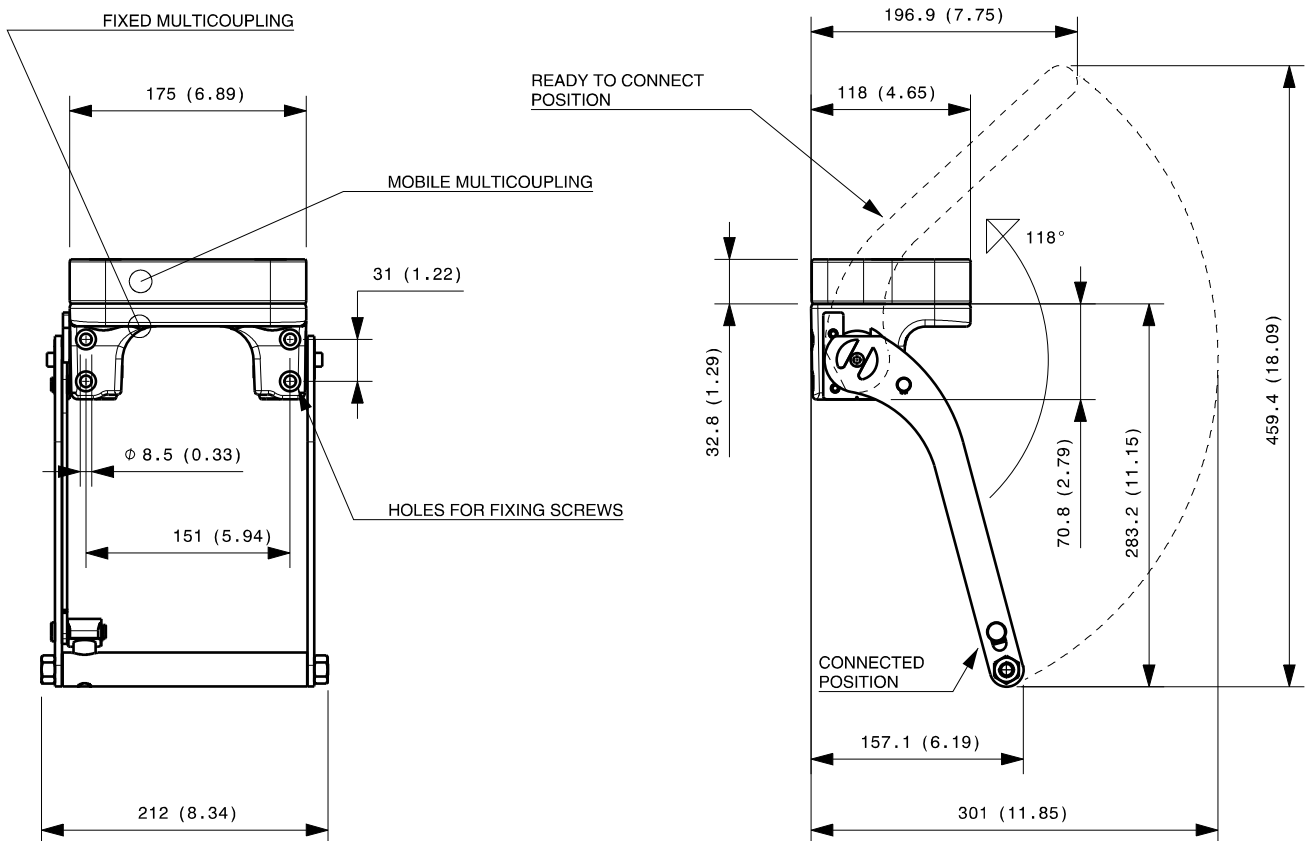
MultiCoupling (couplings included)		
Code	Name	Description
870016020	MULTI COMPLETE GRHP7 7A	4 FAP9D 3/8 BSP - 3 FAP9HP 3/8 NPT - CAP
870016120	MULTI FIX GRHP7 7A	4 FAP9D 3/8 BSP - 3 FAP9HP 3/8 NPT
870016220	MULTI MOBILE GRHP7 7A	4 FAP9D 3/8 BSP - 3 FAP9HP 3/8 NPT

MultiCoupling spare parts (couplings not included)	
Code	Name
806000330	MULTI FIX EMPTY GRHP7 7A-4EC
806000331	MULTI MOBILE EMPTY GRHP7 7A-4EC
815606260	CAP FIX MULTICOUPLING GR 175x117 V02
815606261	PARKING STATION MOBILE MULTICOUPLING GR 180x120 V02
815701055	SPARE KIT LEVER GROUP GR 250x212

Custom configurations available upon request

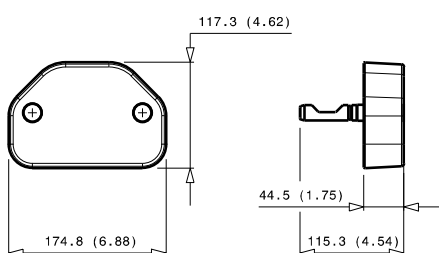
Fixed and mobile multicoupling

5,6 Kg and 2,9 Kg



Dimensions in millimeters (inch)

Cap for fixed multicoupling 1,2 Kg



Parking station for mobile multicoupling 2,3 Kg

