

GR7 4A-1B-2D-4EC

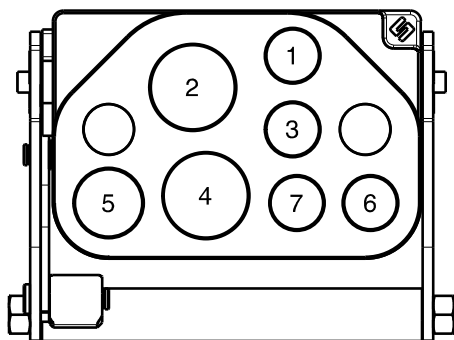
Previous description	Max. Resistance	FAP9 (A)	FAP13 (B)	FAP15 (C)	FAP17 (D)	FAP21 (E)	FAP30 (G)
Body size		3/8"	1/2"	5/8"	3/4"	1"	1-1/2"
GR7AAZN	23000 N	4 D	1		2		



DRAWING



CONFIGURATIONS



Possible configurations		
Pos	Coupling size	Predisposition for electrical connector
1	FAP9DZN	YES
2	FAP17ZN	-
3	FAP9DZN	YES
4	FAP17ZN	-
5	FAP13ZN	-
6	FAP9DZN	YES
7	FAP9DZN	YES

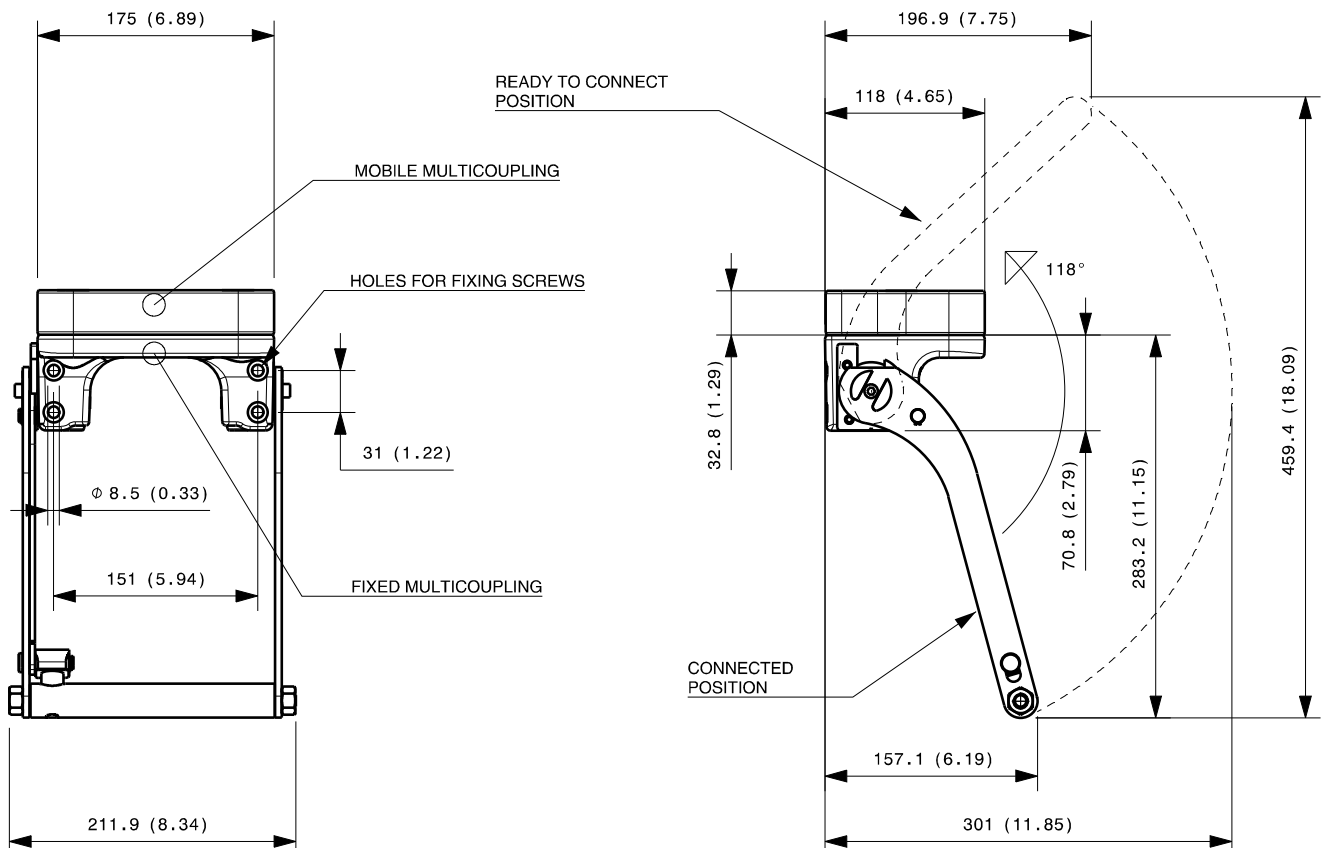
MultiCoupling (couplings included)		
Code	Name	Description
870016006	MULTI COMPLETE GR7 3A-1B-2D-1EC	1 FAP9D 1/4 BSP - 2 FAP9D 3/8 BSP - 1 FAP13 1/2 BSP - 2 FAP17 1 BSP - 1EC7 - CAP
870016075	MULTI COMPLETE GR7 4A-2D	4 FAP9D 3/8 NPT - 2 FAP17 3/4 NPT - CAP
870016106	MULTI FIX GR7 3A-1B-2D-1EC	1 FAP9D 1/4 BSP - 2 FAP9D 3/8 BSP - 1 FAP13 1/2 BSP - 2 FAP17 1 BSP - 1EC7
870016139	MULTI FIX GR7 1B-2D-4EC	1 FAP13 1/2 BSP - 2 FAP17 1 BSP - 4 EC6
870016206	MULTI MOBILE GR7 3A-1B-2D-1EC	1 FAP9D 1/4 BSP - 2 FAP9D 3/8 BSP - 1 FAP13 1/2 BSP - 2 FAP17 1 BSP - 1EC7
870016239	MULTI MOBILE GR7 1B-2D-4EC	1 FAP13 1/2 BSP - 2 FAP17 1 BSP - 4 EC6

MultiCoupling spare parts (couplings not included)		
Code	Name	Description
806000324	MULTI FIX EMPTY GR7 4A-1B-2D-4EC	
806000325	MULTI MOBILE EMPTY GR7 4A-1B-2D-4EC	
815606260	CAP FIX MULTICOUPLING GR 175x117 V02	
815606261	PARKING STATION MOBILE MULTICOUPLING GR 180x120 V02	
815701055	SPARE KIT LEVER GROUP GR 250x212	

Custom configurations available upon request

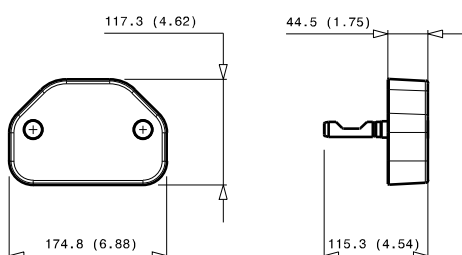
Fixed and mobile multicoupling

5,4 Kg and 2,6 Kg



Dimensions in millimeters (inch)

Cap for fixed multicoupling 1,2 Kg



Parking station for mobile multicoupling 2,4 Kg

