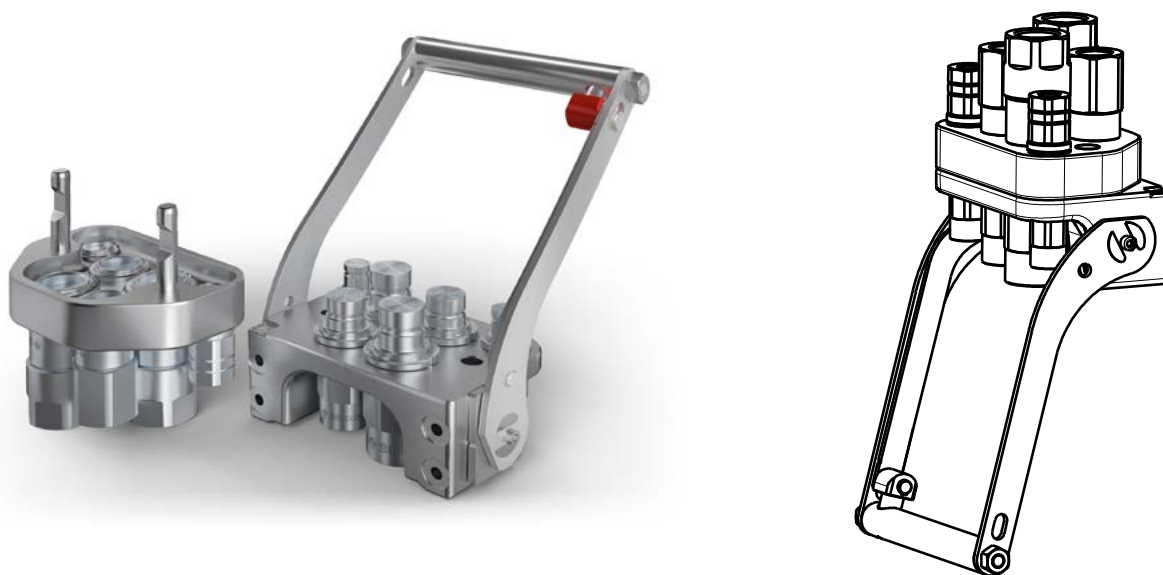


# GR6 2A-2C-2D-2EC

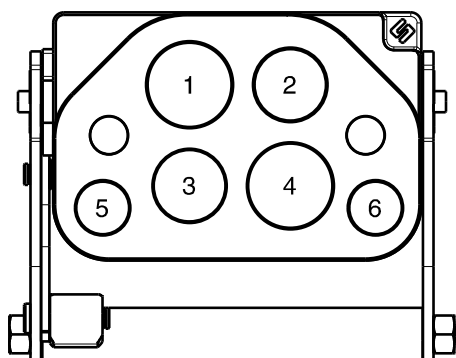
Previous description	Max. Resistance	FAP9 (A)		FAP13 (B)	FAP15 (C)	FAP17 (D)	FAP21 (E)	FAP30 (G)
Body size		3/8"	D	1/2"	5/8"	3/4"	1"	1-1/2"
GRM6ZN	23000 N	2	D		2	2		



## DRAWING



## CONFIGURATIONS



Possible configurations		
Pos	Coupling size	Predisposition for electrical connector
1	FAP17ZN	-
2	FAP15ZN	-
3	FAP15ZN	-
4	FAP17ZN	-
5	FAP9DZN	YES
6	FAP9DZN	YES

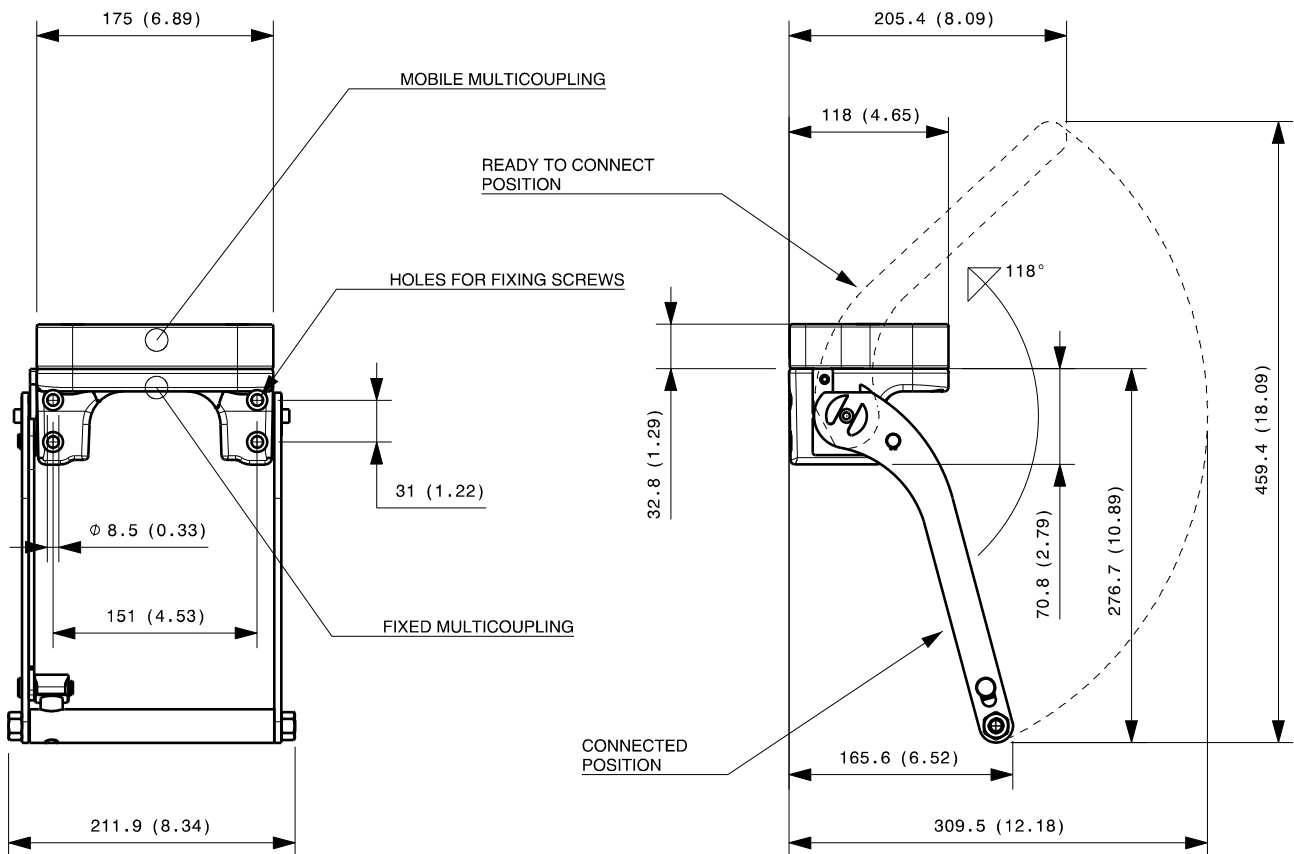
MultiCoupling (couplings included)		
Code	Name	Description
870015062	MULTI COMPLETE GR6 1A-2C-2D	1 FAP9D 3/8 BSP - 2 FAP15 3/4 BSP - 2 FAP17 1 BSP - CAP
870015092	MULTI COMPLETE GR6 2A-2C-2D	2 FAP9D 3/8 BSP - 2 FAP15 3/4 BSP - 2 FAP17 1 BSP - CAP
870015094	MULTI COMPLETE GR6 2A-2C-1D	2 FAP9D 3/8 BSP - 2 FAP15 3/4 BSP - 1 FAP17 1 BSP - CAP
870015098	MULTI COMPLETE GR6 2A-2D	2 FAP9D 3/8 BSP - 2 FAP17 1 BSP - CAP
870015155	MULTI FIX GR6 2D-2EC	2 FAP17 1 BSP - 2 EC6
870015198	MULTI FIX GR6 2A-2D	2 FAP9D 3/8 BSP - 2 FAP17 1 BSP
870015255	MULTI MOBILE GR6 2D-2EC	2 FAP17 1 BSP - 2 EC6
870015298	MULTI MOBILE GR6 2A-2D	2 FAP9D 3/8 BSP - 2 FAP17 1 BSP

MultiCoupling spare parts (couplings not included)	
Code	Name
806000300	MULTI FIX EMPTY GR6 2A-2C-2D-2EC
806000301	MULTI MOBILE EMPTY GR6 2A-2C-2D-2EC
815606258	CAP FIX MULTICOUPLING GR 175x117 V01
815606259	PARKING STATION MOBILE MULTICOUPLING GR 180x120 V01
815700999	SPARE KIT LEVER GROUP GR 250x212

Custom configurations available upon request

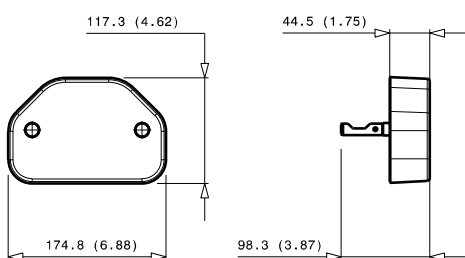
## Fixed and mobile multicoupling

5,7 Kg and 2,6 Kg



Dimensions in millimeters (inch)

### Cap for fixed multicoupling 1,1 Kg



### Parking station for mobile multicoupling 2,2 Kg

2,2 Kg

