

GR6 2A-2B-2C-2EC

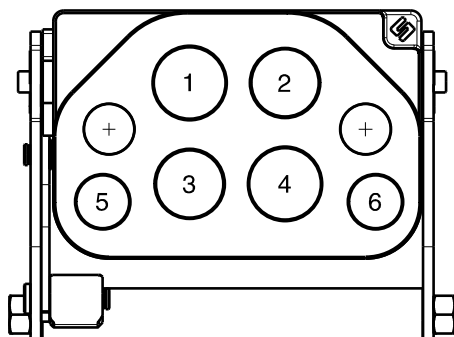
| Previous description | Max. Resistance | FAP9 (A) | FAP13 (B) | FAP15 (C) | FAP17 (D) | FAP21 (E) | FAP30 (G) |
|----------------------|-----------------|----------|-----------|-----------|-----------|-----------|-----------|
| Body size | | 3/8" | 1/2" | 5/8" | 3/4" | 1" | 1-1/2" |
| GRM6MCZN | 23000 N | 2 D | 2 | 2 | | | |



DRAWING



CONFIGURATIONS



| Possible configurations | | |
|-------------------------|---------------|---|
| Pos | Coupling size | Predisposition for electrical connector |
| 1 | FAP15ZN | - |
| 2 | FAP13ZN | - |
| 3 | FAP13ZN | - |
| 4 | FAP15ZN | - |
| 5 | FAP9DZN | YES |
| 6 | FAP9DZN | YES |

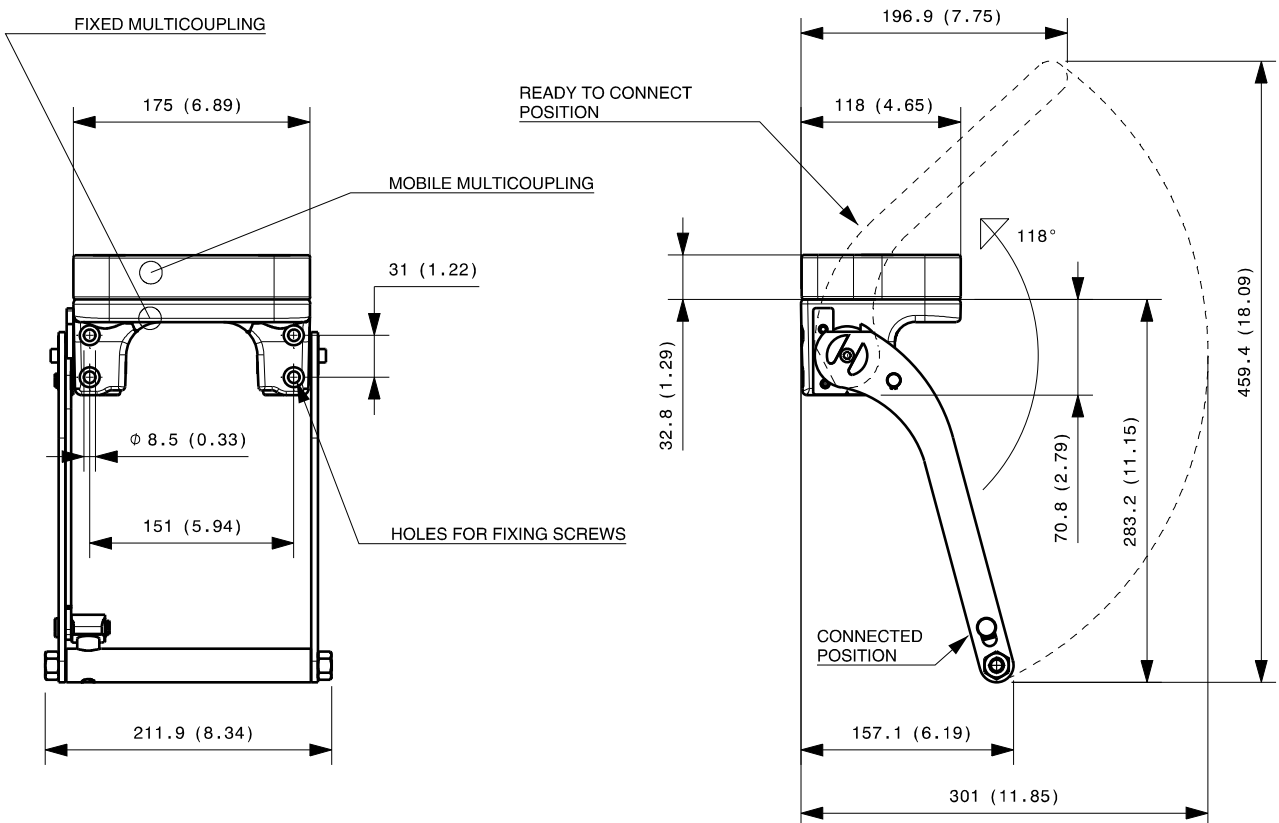
| MultiCoupling (couplings included) | | |
|------------------------------------|-----------------------------|---|
| Code | Name | Description |
| 870016016 | MULTI COMPLETE GR6 2A-2B-2C | 2 FAP9D 3/8 BSP - 2 FAP13 1/2 BSP - 2 FAP15 3/4 BSP - CAP |
| 870016028 | MULTI COMPLETE GR6 1A-2B-2C | 1 FAP9D 3/8 BSP - 2 FAP13 1/2 BSP - 2 FAP15 3/4 BSP - CAP |
| 870016116 | MULTI FIX GR6 2A-2B-2C | 2 FAP9D 3/8 BSP - 2 FAP13 1/2 BSP - 2 FAP15 3/4 BSP |
| 870016128 | MULTI FIX GR6 1A-2B-2C | 1 FAP9D 3/8 BSP - 2 FAP13 1/2 BSP - 2 FAP15 3/4 BSP |
| 870016135 | MULTI FIX GR6 1A-2B-2C | 1 FAP9D 1/2 BSP - 2 FAP13 1/2 BSP - 2 FAP15 3/4 BSP |
| 870016165 | MULTI FIX GR6 2A-2B-2C | 1 FAP9D 3/8 BSP - 1 FAP9D 1/2 BSP - 2 FAP13 1/2 BSP - 2 FAP15 3/4 BSP |
| 870016216 | MULTI MOBILE GR6 2A-2B-2C | 2 FAP9D 3/8 BSP - 2 FAP13 1/2 BSP - 2 FAP15 3/4 BSP |
| 870016228 | MULTI MOBILE GR6 1A-2B-2C | 1 FAP9D 3/8 BSP - 2 FAP13 1/2 BSP - 2 FAP15 3/4 BSP |
| 870016235 | MULTI MOBILE GR6 1A-2B-2C | 1 FAP9D 1/2 BSP - 2 FAP13 1/2 BSP - 2 FAP15 3/4 BSP |
| 870016265 | MULTI MOBILE GR6 2A-2B-2C | 1 FAP9D 3/8 BSP - 1 FAP9D 1/2 BSP - 2 FAP13 1/2 BSP - 2 FAP15 3/4 BSP |

| MultiCoupling spare parts (couplings not included) | |
|--|---|
| Code | Name |
| 806000318 | MULTI FIX EMPTY GR6 2A-2B-2C-2EC |
| 806000319 | MULTI MOBILE EMPTY GR6 2A-2B-2C-2EC |
| 815606260 | CAP FIX MULTICOUPLING GR 175x117 V02 |
| 815606261 | PARKING STATION MOBILE MULTICOUPLING GR 180x120 V02 |
| 815701055 | SPARE KIT LEVER GROUP GR 250x212 |

Custom configurations available upon request

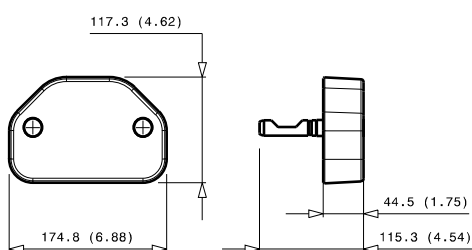
Fixed and mobile multicoupling

5,7 Kg and 2,9 Kg



Dimensions in millimeters (inch)

Cap for fixed multicoupling 1,2 Kg



Parking station for mobile multicoupling 2,4 Kg

2,4 Kg

