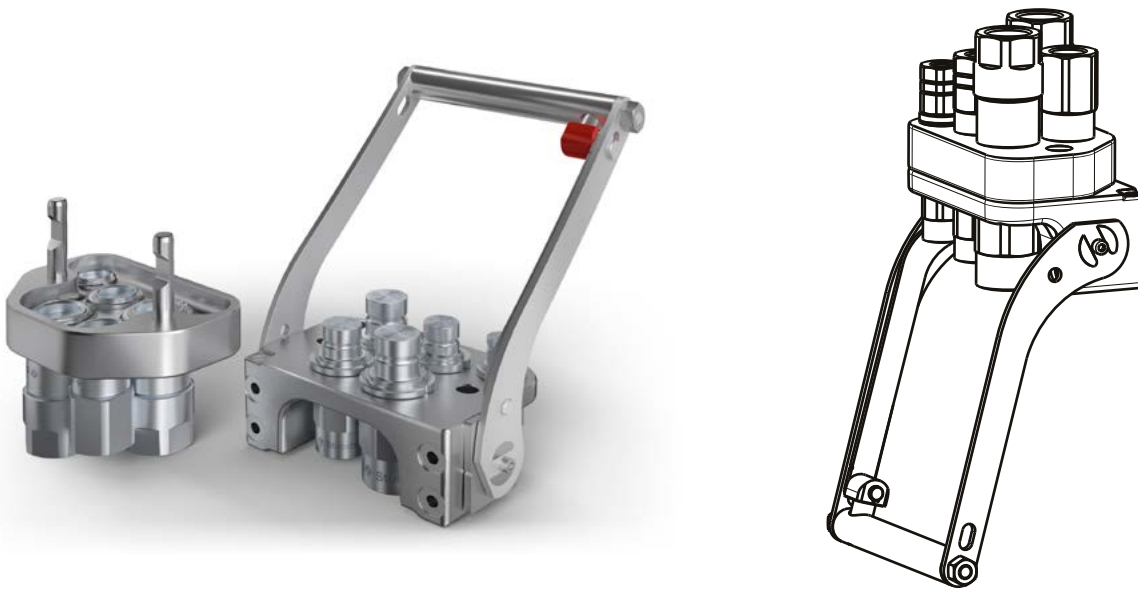


GR5 1A-1B-1C-2D-1EC

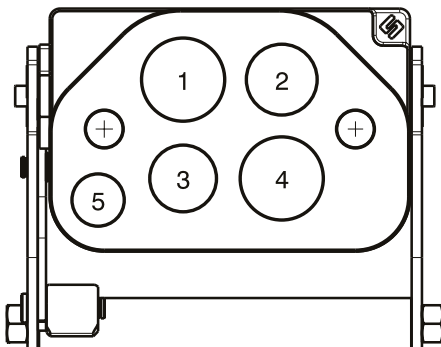
Previous description	Max. Resistance	FAP9 (A)	FAP13 (B)	FAP15 (C)	FAP17 (D)	FAP21 (E)	FAP30 (G)
Body size		3/8"	1/2"	5/8"	3/4"	1"	1-1/2"
GRP6ZN	23000 N	1 D	1	1	2		



DRAWING



CONFIGURATIONS



Possible configurations		
Pos	Coupling size	Predisposition for electrical connector
1	FAP17ZN	-
2	FAP15ZN	-
3	FAP13ZN	-
4	FAP17ZN	-
5	FAP9DZN	YES

MultiCoupling (couplings included)

Code	Name	Description
870016061	MULTI COMPLETE GR5 1A-1B-1C-2D	1 FAP9D 3/8 BSP - 1 FAP13 1/2 BSP - 1 FAP15 3/4 BSP - 2 FAP17 1 BSP - CAP
870016161	MULTI FIX GR5 1A-1B-1C-2D	1 FAP9D 3/8 BSP - 1 FAP13 1/2 BSP - 1 FAP15 3/4 BSP - 2 FAP17 1 BSP
870016261	MULTI MOBILE GR5 1A-1B-1C-2D	1 FAP9D 3/8 BSP - 1 FAP13 1/2 BSP - 1 FAP15 3/4 BSP - 2 FAP17 1 BSP

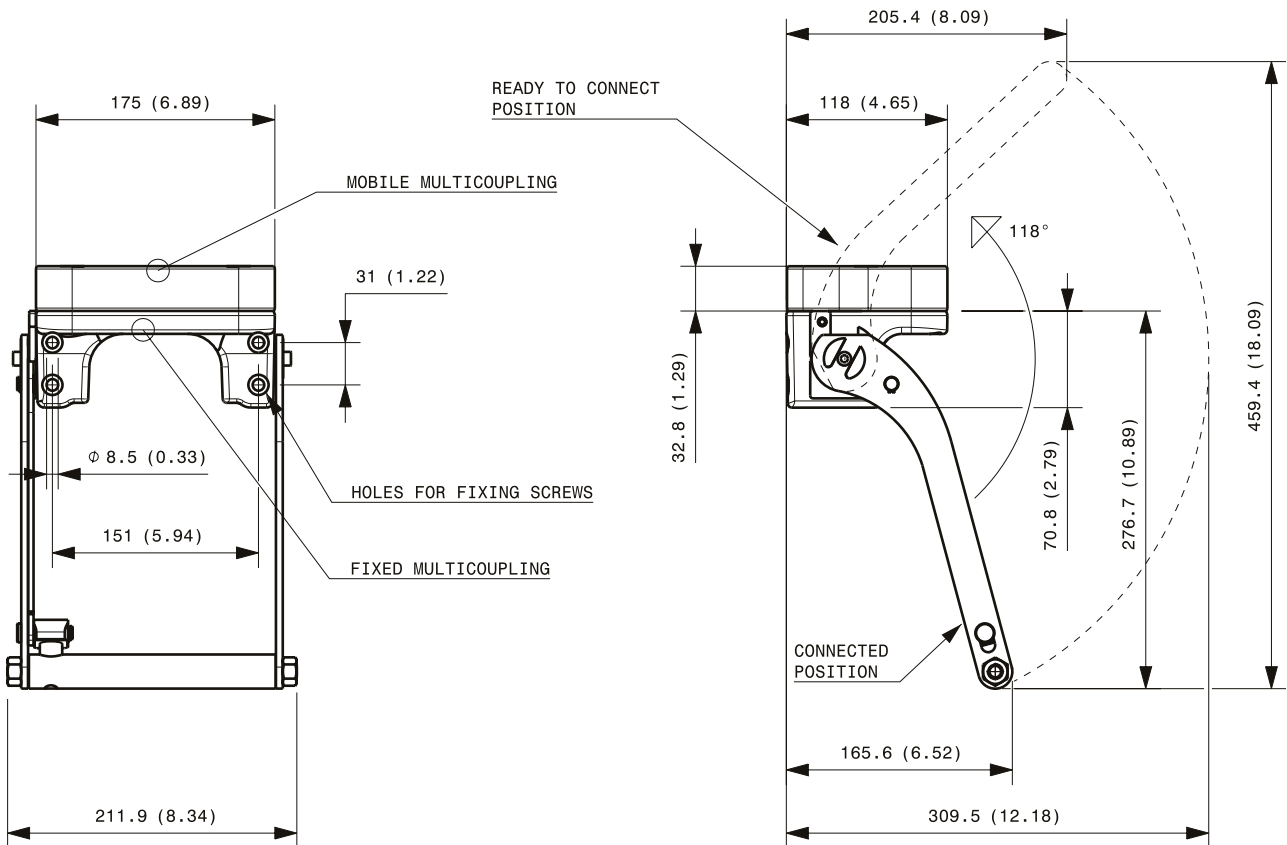
MultiCoupling spare parts (couplings not included)

Code	Name
806000432	MULTI FIX EMPTY GR5 1A-1B-1C-2D-1EC
806000433	MULTI MOBILE EMPTY GR5 1A-1B-1C-2D-1EC
815606258	CAP FIX MULTICOUPLING GR 175x117 V01
815606259	PARKING STATION MOBILE MULTICOUPLING GR 180x120 V01
815700999	SPARE KIT LEVER GROUP GR 250x212

Custom configurations available upon request

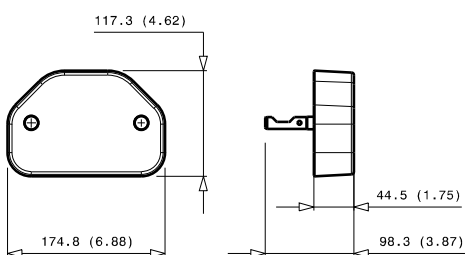
Fixed and mobile multicoupling

5,7 Kg and 2,7 Kg



Dimensions in millimeters (inch)

Cap for fixed multicoupling 1,1 Kg



Parking station for mobile multicoupling 2,3 Kg

