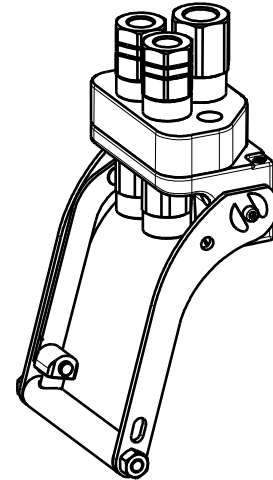


# GR3 2B-1C-2EC

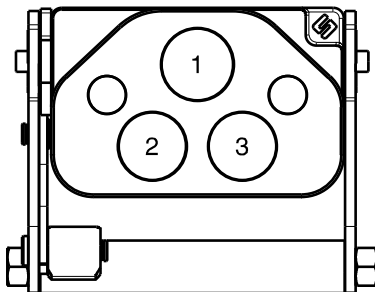
Previous description	Max. Resistance	FAP9 (A)	FAP13 (B)	FAP15 (C)	FAP17 (D)	FAP21 (E)	FAP30 (G)
GR13	18000 N	3/8"	1/2"	5/8"	3/4"	1"	1-1/2"
			2	1			



## DRAWING



## CONFIGURATIONS



Possible configurations		
Pos	Coupling size	Predisposition for electrical connector
1	FAP15ZN	-
2	FAP13ZN	YES
3	FAP13ZN	YES

### MultiCoupling (couplings included)

Code	Name	Description
870015065	MULTI COMPLETE GR3 2B-1C	2 FAP13 1/2 BSP - 1 FAP15 3/4 BSP - CAP
870015165	MULTI FIX GR3 2B-1C	2 FAP13 1/2 BSP - 1 FAP15 3/4 BSP
870015265	MULTI MOBILE GR3 2B-1C	2 FAP13 1/2 BSP - 1 FAP15 3/4 BSP

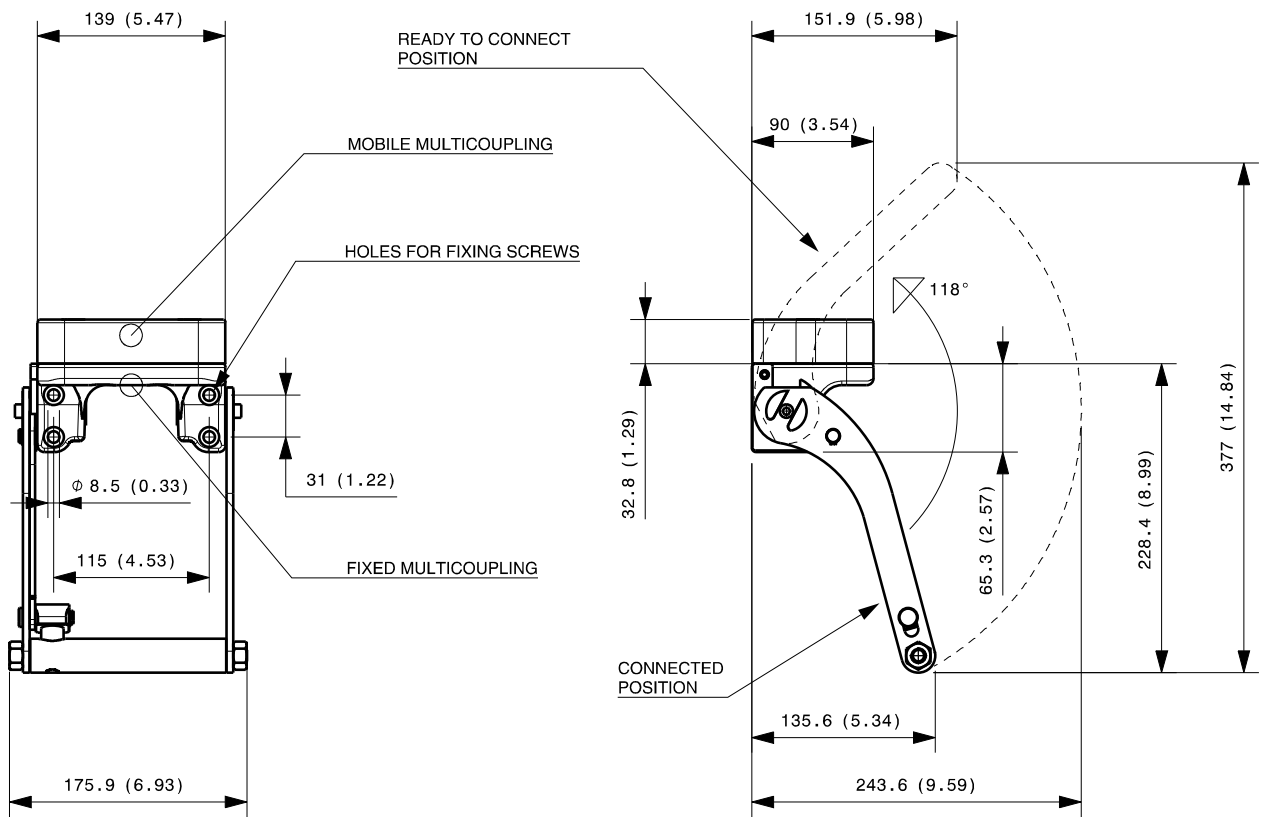
### MultiCoupling spare parts (couplings not included)

Code	Name
806000376	MULTI FIX EMPTY GR3 2B-1C-2EC
806000377	MULTI MOBILE EMPTY GR3 2B-1C-2EC
815606248	CAP FIX MULTICOUPLING GR 139x90
815606249	PARKING STATION MOBILE MULTICOUPLING GR 140x100
815701052	SPARE KIT LEVER GROUP GR 200x176

Custom configurations available upon request

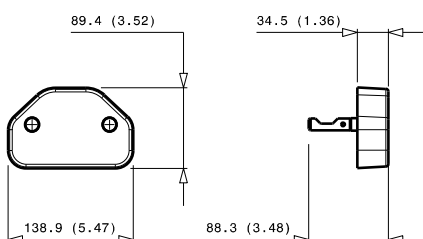
## Fixed and mobile multicoupling

3,7 Kg and 1,7 Kg



Dimensions in millimeters (inch)

### Cap for fixed multicoupling 0,6 Kg



### Parking station for mobile multicoupling 1,1 Kg

