

# BM2 1A-1G-1EC V01

SPECIAL SERIES



FAP9 (A)	FAP13 (B)	FAP15 (C)	FAP17 (D)	FAP21 (E)	FAP30 (G)	EC
3/8"	1/2"	5/8"	3/4"	1"	1-1/2"	instead of DN9 or DN13
1 D					1 - special	1

## Technical specifications and options



**Interchange**  
Stucchi profile



**Sealing**  
Nitrile NBR



**Available sizes**  
1"-1/2"



**Material**  
Aluminium, Carbon steel



**Valving style**  
Flat face



**Connection Under Pressure**  
Allowed with Easy CUP



**Operating pressure**  
up to 420 bar



**Locking mechanism**  
Pin, Cam



**Temperature**  
-20°C / +100°C



**Connection system**  
Lever



**Available threads**  
BSP



**Flow rate**  
up to 750l/min

## Benefits

- Specific design developed to be assembled on excavator arm, with an ergonomic connection in order to be appreciated in the earth moving.
- Specific design for hydraulic lines above 1": the lever/cam system minimizes the force required to connect the couplings, even with significant pressure trapped in the circuit and under difficult conditions (environment, access, etc.).
- The locking mechanism ensures a full connection and prevents any accidental disconnection.
- Specific indexator avoids misconnection with different mobile plate.
- Designed to be used with hydraulic oil for fluid power application.
- Safety system on the mobile plate avoids accidental falling during the disconnection.
- Special rubber seal prevents dirt inclusion.
- The additional service line can be used with optional electrical connector or one drain line FAP9 (3/8).
- Robust guidance pins guarantee the correct alignment before the connection.
- Parking station and cover plates protects the system from contamination and damage as well as to provide a convenient storage solution.
- The removable lever (that can be parked in the optional bracket on the parking station) increases usability reducing the overall dimension.
- Flat face couplings are easy to clean, reducing the inclusion of contamination to the hydraulic circuit.
- Internal valve design creates minimal pressure drop, maintaining circuit efficiency in the system.
- Minimal fluid loss during disconnection, reducing fluid loss to the environment.
- Minimal air inclusion during connection/disconnection.
- High resistance at impulse pressures.
- Safe and simple to use.

## Main applications



Agriculture



Oil & Gas



Industry



High Pressure



Cooling



Refrigeration



Earth Moving



Vehicles



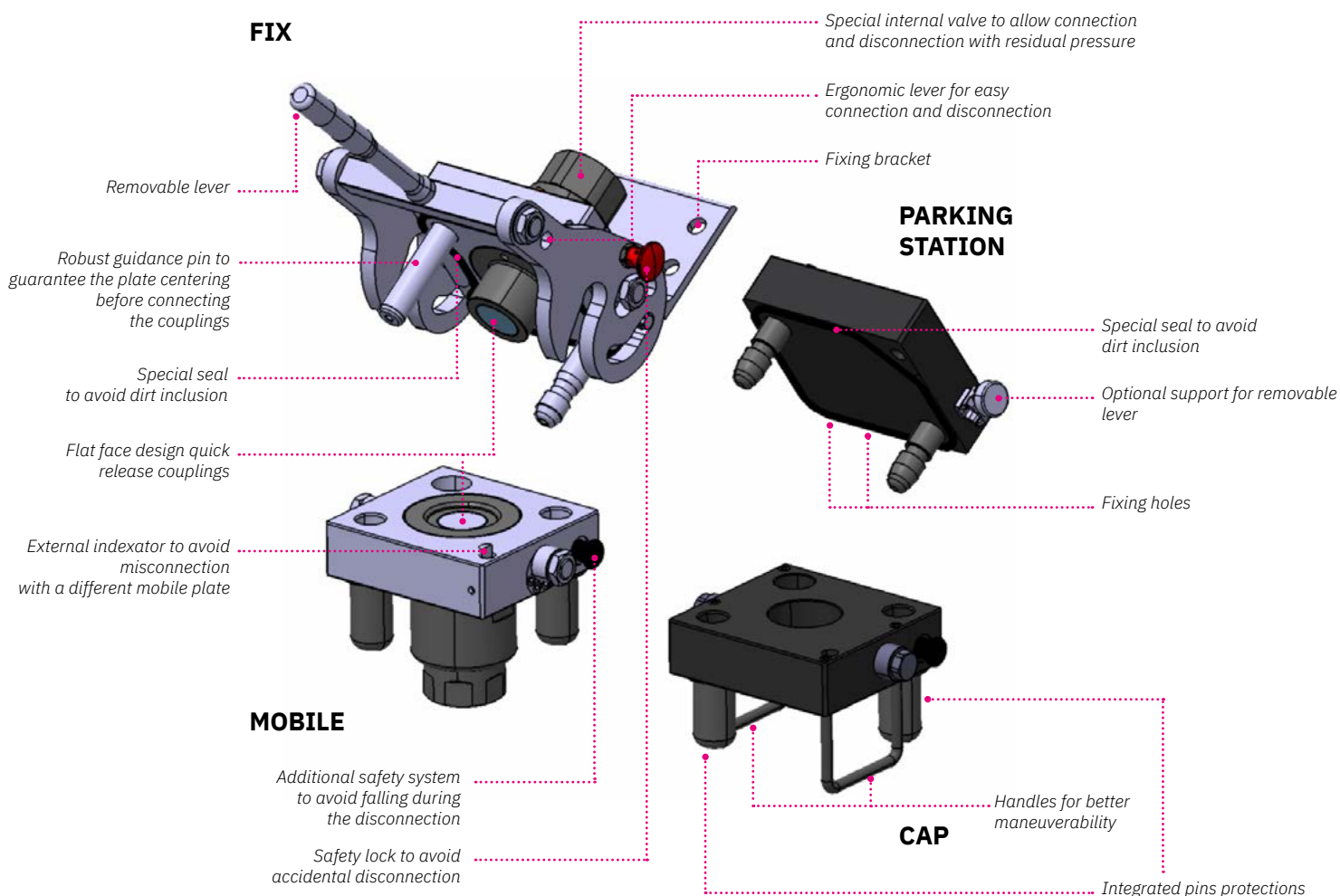
Hydraulic Equipment



Chemical & Food Industry

## Features

V01 version with reverse connection system for an ergonomic connection on excavator application.



## Performances (with FAP30)

Size	Series	Max. flow suggested		Spillage*	Max. operating pressure					
					Coupled		Male		Female	
Inch		l/min	GPM	ml	MPa	psi	MPa	psi	MPa	psi
1-1/2	FAP30AS2	750	198,75	0,2	42	6000	42	6000	27	3915

\* Spillage is an indicative value of the fluid loss per couple-uncouple cycle.  
FAP9 line is only for drain line (max working pressure 1 MPa).

**Temperature range:** Standard seals NBR, PUR, POM from -20 °C to +100 °C ( from -4 °F to +212 °F).

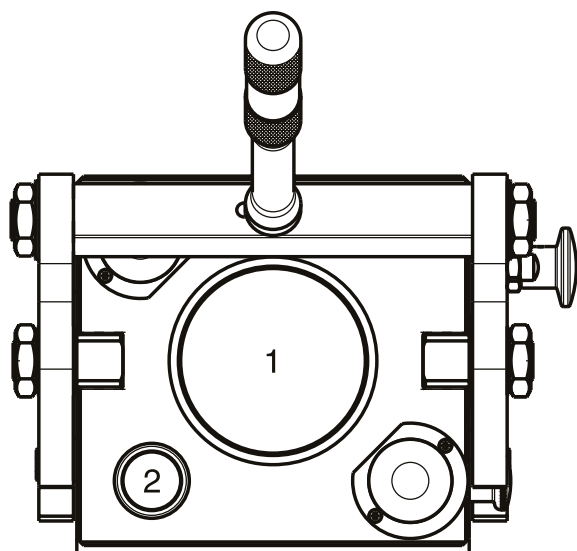
**Tests:** The couplings have been tested at max. operating pressure for 500.000 impulses in connected position in accordance with ISO norm.

Different threads available upon request.

## Installation, use and maintenance

- Install the fixed multiconnection with the proper fixing holes, by referring to the drawing shown in the datasheet.
- Install the flexible hoses on the coupling of the fixed and mobile multiconnection, by screwing them with proper torque.
- Clean the mating surface of the parts prior to connect.
- Insert and lock the removable lever in the corresponding hole on the lever system of the fixed multiconnection.
- Put the lever of the fixed multiconnection in complete open position, by disengaging the locking button and rotate the lever until the button is again engaged in the open position.
- Connect the mobile multiconnection by engaging the guiding pins into the fixed multiconnection.
- Disengage the button of the safety lock then connect the multiconnection by rotating the lever until the stroke is complete and the locking button engaged again in the closed position.
- When the mobile is connected with fixed multiconnection, the cap can be easily parked in the parking station.
- Disconnect the lever from the fixed part in order to avoid injuries from fall or lose it. Park it in the proper (optional) bracket.
- To disconnect the plate, insert the lever and disengage the locking button then rotate by doing vice versa the sequence above described.
- Then disengage the safety “anti-fall” locking system by pulling the knob on the mobile and separate the mobile multiconnection.
- After disconnection, clean the parts and apply the cap on the fixed part then connect the mobile part in the parking station to protect from dust and dirt.
- Disconnect and put the lever in the bracket.
- Clean frequently the multiconnection and the components.
- If needed, lubricate the connection and guiding parts.
- Check periodically the multiconnection by looking for leakage, damage or malfunctioning.

## Configurations



### Possible configurations

Position	Coupling Size	Predisposition for electrical connector
1	FAP30	-
2	FAP9D	YES

## Plates and spare parts

### Multicoupling (couplings included)

Code	Name	Description
870017107	MULTI FIX BM2 1G V01 Provided with removable lever	1 FAP30AS 1-1/2 BSP
870017207	MULTI MOBILE BM2 1G V01	1 FAP30AS 1-1/2 BSP

### Multicoupling spare parts (couplings not included)

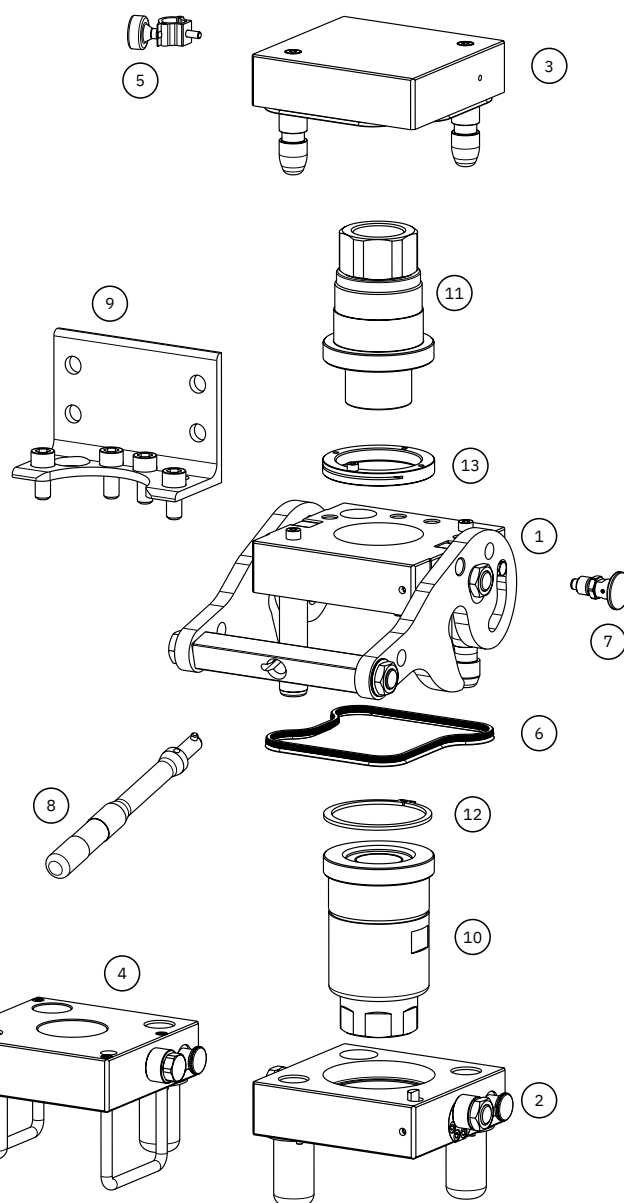
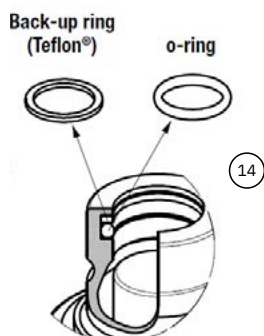
Code	Name	Key
806000418	MULTI FIX EMPTY BM2 1A-1G-1EC V01 Removable lever not included, to be ordered separately	1
806000419	MULTI MOBILE EMPTY BM2 1A-1G-1EC V01	2
815606316	CAP FIX MULTI BM 170X160 V01	3
815606317	PARKING STATION MULTI BM 170x160	4
815524016	SUPPORT FOR LEVER BM	5
815701279	SPARE KIT DUST SEAL PLATE BM2	6
815701280	SPARE KIT SAFETY BUTTON BM	7
815701281	SPARE KIT REMOVABLE HANDLE BM	8
815701282	SPARE KIT BRACKET BM2	9

### Spare parts

Code	Name	Key
807100058*	F FAP30AS2 1-1/2 BSP	10
807100059**	M FAP30AS2 1-1/2 BSP	11
815701156	SPARE KIT SEEGER F FAP30AS2	12
815701157	SPARE KIT LOCKING SLEEVE M FAP30AS2	13
815701171	SPARE KIT OR NBR+BK M FAP30AS2	14

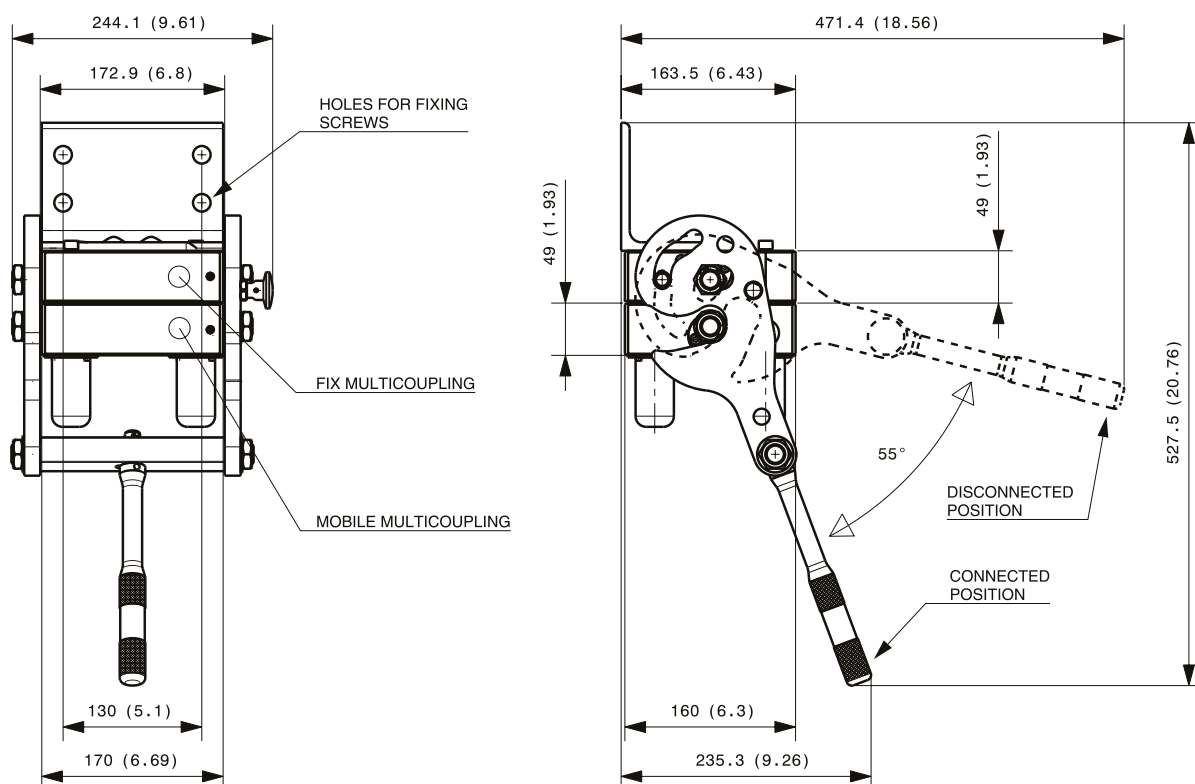
\* Seeger ring is not included in the female coupling; to be ordered separately.

\*\* Male locking sleeve and screw are not included in the female coupling; to be ordered separately.

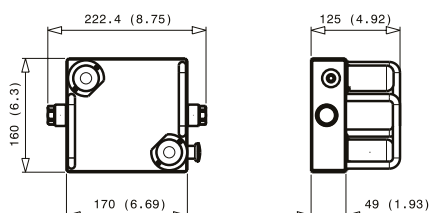


## Overall dimensions

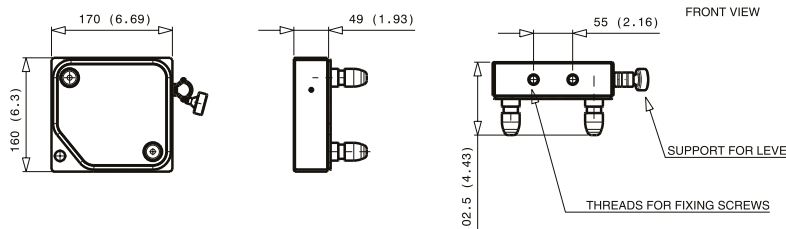
### Fixed and mobile multicoupling



### Cap for fix multicoupling



### Parking station for mobile multicoupling



Dimensions in mm (inches)

## ⚠ WARNINGS

A defect, a wrong choice or an improper use of products, can cause injury to persons, animals and objects.  
 Connect under pressure products are suitable to be connected under residual (static) pressure.  
 Never connect or disconnect with dynamic pressure (e.g. pump on).  
 Do not use the female coupling disconnected with high impulse pressure.  
 Do not couple-uncouple with flow in the circuit.  
 Do not couple-uncouple when the temperature inside of the circuit is higher than 80 °C (176 °F).  
 Check the maximum allowable working pressure of the port in use.  
 It is important to limit contamination in the circuit to avoid compromising the function of the internal valves.  
 Make sure that the medium used is compatible with seal and material as indicated for each series.  
 Do not force the lever without pushing the red safety button.  
 Do not use extensions or other tools to ease the rotating of the lever.  
 Do not connect the fixed half with the mobile half if dirt or tools are between them.  
 Pay attention during the connection not to put finger between the plates.  
 We advise to assemble the multicoupling with the female face down in order to allow water or moisture to be drained easily.  
 Do not exceed single coupling performance and total multicoupling resistance of the multicoupling (please refer to dedicated datasheet).  
 Do not to pressurize the "auxiliary line with FAP9-3/8" line as this line has to be used for drain line only.  
 When the multicoupling is disconnected, it is suggested to use the protection cover for the fixed half and the parking station for the mobile half.  
 Do not to modify, disassemble or damage the multicoupling, part of it or coupling/electrical connector, the lever or safety lock system.  
 Stucchi Multicoupling BM2-V01 is intended to be used for hydraulic oil applications: do not use the products for dangerous, inflammable or explosive fluids.  
 The quick coupling FAP-AS series is intended to be used only on Stucchi Multicouplings BM2-V01. Do not use the FAP-AS coupling on a Custom-made multicoupling or other device different than a Stucchi Multicoupling.  
 In case of doubt please contact Stucchi Technical Support.  
**It is MANDATORY to read and closely follow the instructions. Last updated version always applies at time of installation, see latest Instructions and warnings on Stucchi website before selecting or using Stucchi products.**