



MAIN APPLICATIONS



Agriculture



Oil & Gas



Industry



High Pressure



Cooling



Refrigeration



Earth Moving



Vehicles



Hydraulic Equipment



Chemical & Food Industry

Technical specifications and options



Sealing description
Nitrile NBR



Available sizes
from 1/4" to 2-1/2"



Material / treatment
Carbon steel / Cr3



Available threads
BSP



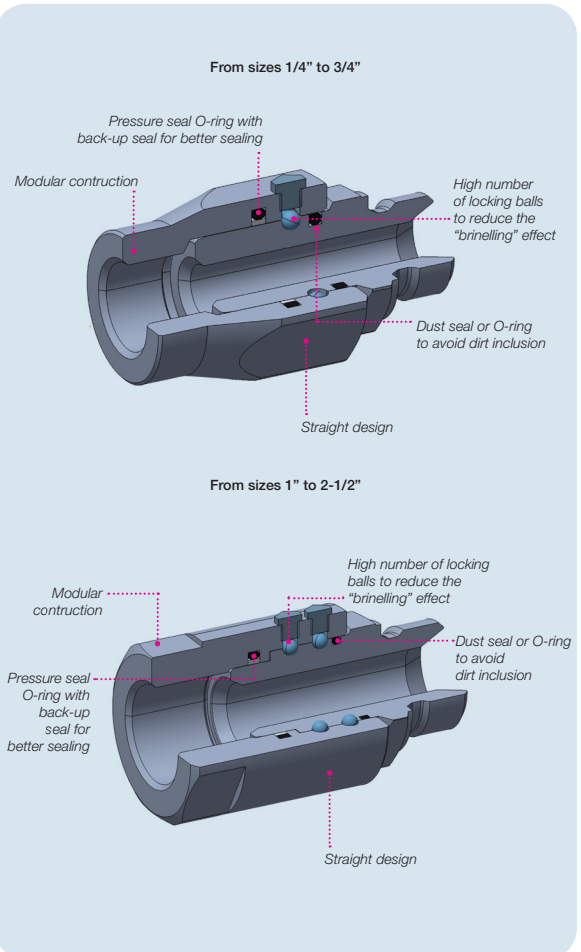
Operating pressure
Up to 400 bar



Temperature
-20°C / +100°C

Benefits

- Compact slim design.
- Safe and simple to use.
- Reduce system rigidity.
- Modularity: male port allows to connect directly to hose lines without adapters reducing overall costs of hydraulics.
- Designed to be mounted between a hose assembly and a rigid component in order to allow and compensate occasional rotations, preventing hose damages.



⚠ WARNING

A defect, a wrong choice or an improper use of products, can cause injury to persons, animals and objects.

To ensure a good efficiency of the system, it is important to select correctly the dimension based on flow performances and the application working pressure.

All swivel joint must have a flexible connector at one end, connected with proper torque. Warranty is void without a flexible connector on one end.

Make sure that the medium used is compatible with seal and material as indicated.

GD series is intended to be used with standard hydraulic oils in fluid power application. Do not use the GD series with different fluids (for example with inflammable, corrosive or dangerous fluids, gases ecc).

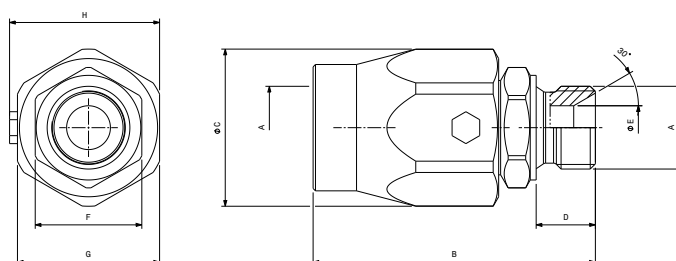
In case of doubt please contact Stucchi Technical Support.

It is MANDATORY to read and closely follow the instructions. Last updated version always applies at time of installation, see latest Instructions and warnings on Stucchi website before selecting or using Stucchi products.

Performances

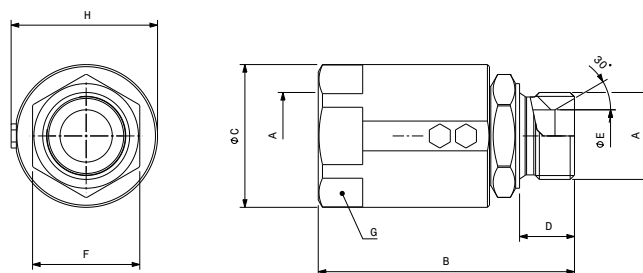
Size	Series	Max. operating pressure			
		in rotation		static	
in		MPa	psi	MPa	psi
1/4	GD 14	20	2900	40	5800
3/8	GD 38	20	2900	40	5800
1/2	GD 12	15	2175	30	4350
3/4	GD 34	15	2175	30	4350
1	GD 100	10	1450	30	4350
1-1/4	GD 114	10	1450	30	4350
1-1/2	GD 112	8	1160	30	4350
2	GD 200	5	725	25	3625
2-1/2	GD 212	5	725	25	3625

Overall dimensions



STRAIGHT SWIVEL JOINTS: FEMALE THREAD BSP (from 1/4" to 3/4")

Size	Description	Part Number	Port (A)	Length		Wrench Flat 1		Wrench Flat 2		Internal diameter		External diameter		Length							
				mm	in	mm	in	mm	in	mm	in	mm	in	mm	in						
1/4"	GD 14 BSP	820400000	1/4"	B	61,0	2,40	F	19	0,75	G	30	1,18	E	6,50	0,26	C	33,0	1,30	D	11,0	0,43
3/8"	GD 38 BSP	820400001	3/8"	B	66,0	2,60	F	24	0,94	G	34	1,34	E	9,00	0,35	C	37,0	1,46	D	14,0	0,55
1/2"	GD 12 BSP	820400002	1/2"	B	71,0	2,80	F	27	1,06	G	36	1,42	E	12,00	0,47	C	40,0	1,57	D	15,0	0,59
3/4"	GD 34 BSP	820400003	3/4"	B	79,0	3.11	F	34	1.34	G	45	1.77	E	16.00	0.63	C	50.0	1.97	D	19.0	0.75



STRAIGHT SWIVEL JOINTS: FEMALE THREAD BSP (from 1" to 2-1/2")

Size	Description	Part Number	Port (A)	Length		Wrench Flat 1		Wrench Flat 2		Internal diameter		External diameter		Length							
				mm	in	mm	in	mm	in	mm	in	mm	in	mm	in						
1"	GD 100 BSP	820400004	1"	B	98,3	3,87	F	41	1,61	G	50	1,97	E	20,00	0,79	C	55,0	2,17	D	21,0	0,83
1-1/4"	GD 114 BSP	820400005	1-1/4"	B	101,0	3,98	F	50	1,97	G	55	2,17	E	28,00	1,10	C	60,0	2,36	D	24,0	0,94
1-1/2"	GD 112 BSP	820400006	1-1/2"	B	110,0	4,33	F	55	2,17	G	65	2,56	E	34,00	1,34	C	70,0	2,76	D	25,0	0,98
2"	GD 200 BSP	820400007	2"	B	118,0	4,65	F	65	2,56	G	75	2,95	E	44,0	1,73	C	85,0	3,35	D	27,0	1,06
2-1/2"	GD 212 BSP	820400008	2-1/2"	B	138,0	5,43	F	80	3,15	G	90	3,54	E	58,0	2,28	C	98,0	3,86	D	30,0	1,18