

# FE2.SS SERIES

STAINLESS STEEL TWO-WAY BALL VALVE



## STAINLESS STEEL FE2.SS

Ball valves for various applications such as chemical and petrochemical industry, paint industries, environmental installations, off-shore, water, pharma, bio and food industry. Available from nominal size DN4 to DN50 with various connections.

### Connector:

Compression fitting light and heavy series, BSP thread, NPT thread, UNC/UNF female thread, bulkhead connection, thread connection.

### Dimensions:

**body:** stainless steel (1.4571/316Ti)

**ball + stem:** stainless steel (1.4571/316Ti)

**sealing:** plastics, metal

### Adapter:

BSP thread, NPT thread, compression fitting light and heavy series, UNC/UNF female thread, bulkhead connection, welding end and welding taper

### Pressure range:

up to PN400 (note table of dimensions)

### Field of application:

chemical and petrochemical industry, paint industries, environmental installations, off-shore, water, pharma, bio and food industry, gas industry (Coating seals and body materials adapted to application!)

### Temperature range:

standard: -20°C to +80°C (-4 to +176°F)

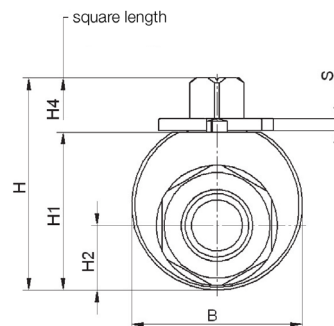
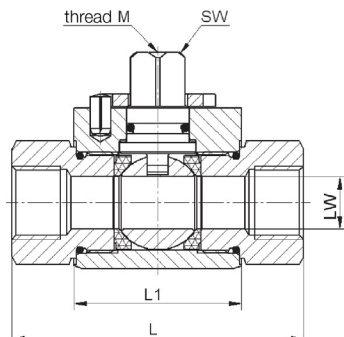
### Surface:

uncoated

### Special equipment on request!

- locking device
- actuators
- position switches
- detent kits
- special materials

## BODY DIMENSIONS WITHOUT COVER



DN	LW	PN <sup>1)</sup>	L1	B	H	H1	H2	H4	SW	M	S
mm	mm	bar	mm	mm	mm	mm	mm	mm	mm		mm
4	Ø 5	400	36,2	Ø 35	43,6	32,2	13	11	9	M5	3
6	Ø 6	400	36,2	Ø 35	43,6	32,2	13	11	9	M5	3
8	Ø 8	400	36,2	Ø 35	43,6	32,2	13	11	9	M5	3
10	Ø 10	400	43,2	Ø 42	49,5	38,25	16,5	10,9	9	M5	3
13	Ø 13	400	48,2	Ø 45	52	40,75	18	10,9	9	M5	3
16	Ø 15	400	48,2	Ø 50	62,5	46,3	19	15,5	12	M6	3,5
20	Ø 20	350	62,2	Ø 60	74,4	57,8	25,5	16	14	M6	4
25	Ø 24	350	66,2	Ø 65	79,2	62,8	28	16	14	M6	4
32	Ø 32	400	81,6	Ø 90	103	84	38,1	18,5	17	M8	5
40	Ø 38 <sup>1)</sup>	400	86,6	Ø 100	114,9	95,9	45,5	18,5	17	M8	5
50	Ø 47,5	400	101,6	Ø 115	129,5	110,5	52,5	18,5	17	M8	5

- <sup>1)</sup>
- Not valid for ARKH, please consider the page welding adapter for further specifications.
  - For PN max. and tightening torque see data of the compression fitting manufacturer.
  - Reduced press. rating must be taken into consideration acc. to application and materials.
  - Dimensions subject to change without notice.

### Order Example

Series	Connection <sup>2)</sup>	Normal Size	Pressure	Material <sup>3)</sup>	Equipment/Specials/Mounting see category equipment
FE2	N	1/2	PN500	SS	

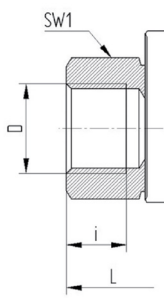
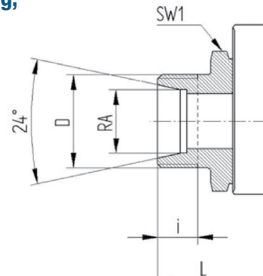
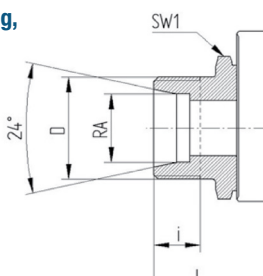
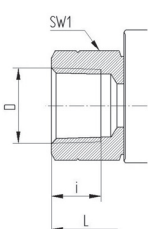
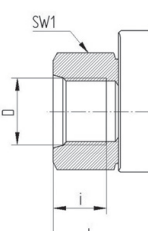
<sup>2)</sup> Left and right side connectors can be used in any combination

<sup>3)</sup> We would be glad helping you to choose proper material and equipment.

Please send your request to: [info@stucchiaustralia.com](mailto:info@stucchiaustralia.com)

Please tell us pressure, temperature and medium of your application!

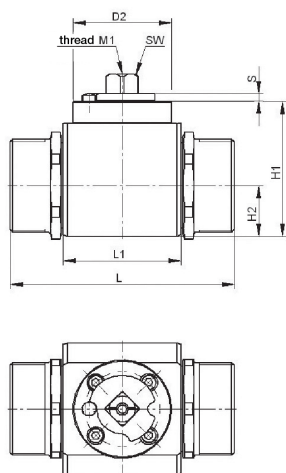
## SCREW SOCKETS FOR FE2.SS

Connection	DN	LW	ScREW size order code	ScREW size for DIN2353	L	i	SW1	Weight
	mm	mm		mm	mm	mm	mm	mm
<b>BSP female thread</b> DIN/ISO 228 Connection Type: G								
	4	Ø 5	G 1/8	-	69	8	22	0,35
	6	Ø 6	G 1/4	-	69	12	22	0,35
	10	Ø 8	G 3/8	-	69	12	22	0,35
	10	Ø 10	G 3/8	-	73	12	27	0,5
	13	Ø 13	G 1/2	-	85	14	30	0,65
	16	Ø 15	G 1/2	-	84	14	32	0,75
	20	Ø 20	G 3/4	-	96	16	41	1,5
	25	Ø 24	G 1	-	113	18	46	2
	32	Ø 24	G 1 1/4	-	121	20	50	2,1
	40	Ø 24	G 1 1/2	-	124	22	55	2,1
	32	Ø 32	G 1 1/4	-	110	20	60	3,8
	40	Ø 32	G 1 1/2	-	135	22	60	3,8
	40	Ø 38	G 1 1/2	-	120	22	70	6,1
	50	Ø 38	G 2	-	147	24	75	6,1
	50	Ø 40	G 2	-	140	24	85	9,1
<b>For compression fitting, light series</b> DIN 2353 L Connection Type: L								
	4	Ø 5	6L	M 12x1,5	67	7,5	22	0,3
	6	Ø 6	8L	M 14x1,5	67	7,5	22	0,3
	8	Ø 8	10L	M 16x1,5	71	8,5	22	0,3
	10	Ø 8	12L	M 18x1,5	71	8,5	22	0,3
	10	Ø 10	12L	M 18x1,5	75	8,5	27	0,5
	13	Ø 10	15L	M 22x1,5	77	9,5	27	0,5
	13	Ø 13	15L	M 22x1,5	84	9,5	30	0,6
	16	Ø 13	18L	M 26x1,5	84	9,5	30	0,6
	16	Ø 13	15L	M 22x1,5	83	9,5	32	0,75
	16	Ø 15	18L	M 26x1,5	83	9,5	32	0,75
	20	Ø 20	22L	M 30x2	102	12	41	1,5
	25	Ø 24	28L	M 36x2	108	12	46	2
	32	Ø 24	35L	M 45x2	114	13,5	50	2,1
	40	Ø 24	42L	M 52x2	114	13,5	55	2,2
	32	Ø 32	35L	M 45x2	128	13,5	60	3,6
40	Ø 32	42L	M 52x2	128	13,5	60	3,6	
40	Ø 38	42L	M 52x2	133	13,5	70	5,9	
<b>For compression fitting, heavy series</b> DIN 2353 S Connection Type: S								
	4	Ø 5	6S	M 16x1,5	73	9,5	22	0,35
	6	Ø 6	10S	M 18x1,5	73	9,5	22	0,35
	8	Ø 8	12S	M 20x1,5	77	9,5	22	0,35
	10	Ø 10	14S	M 22x1,5	84	11,5	27	0,5
	13	Ø 13	16S	M 24x1,5	87	11,5	30	0,6
	16	Ø 13	20S	M 30x2	91	13,5	30	0,65
	16	Ø 13	16S	M 24x1,5	87	11,5	32	0,75
	16	Ø 15	20S	M 30x2	91	13,5	32	0,75
	20	Ø 20	25S	M 36x2	110	15	41	1,5
	25	Ø 24	30S	M 42x2	120	17	46	2,1
	32	Ø 24	38S	M 52x2	125	19	55	2,3
	32	Ø 32	38S	M 52x2	140	19	60	3,7
	<b>NPT female thread</b> ANSI B 1.20.1 Connection Type: N							
4		Ø 5	1/8 NPT	-	69	8	22	0,35
6		Ø 6	1/4 NPT	-	69	11,5	22	0,35
10		Ø 10	3/8 NPT	-	73	12	27	0,5
13		Ø 13	1/2 NPT	-	92	15,5	30	0,65
20		Ø 20	3/4 NPT	-	97	16	41	1,5
25		Ø 24	1 NPT	-	113	19	46	2
32		Ø 24	1 1/4 NPT	-	131	19,5	50	2,1
40		Ø 24	1 1/2 NPT	-	139	19,5	55	2,3
32		Ø 32	1 1/4 NPT	-	115	19,5	60	3,8
40	Ø 38	1 1/2 NPT	-	135	19,5	70	6,1	
50	Ø 48	2 NPT	-	140	20	85	9,1	
<b>UN/UNF female thread</b> SAE J514 Connection Type: SAE								
	6	Ø 6	7/16 - 20 UNF-2B	-	69	11,5	22	0,35
	10	Ø 10	9/16 - 18 UNF-2B	-	75	12,7	27	0,5
	13	Ø 13	3/4 - 16 UNF-2B	-	85	14,3	30	0,65
	16	Ø 15	7/8 - 14 UNF-2B	-	84	16,7	32	0,75
	20	Ø 20	1 1/16 - 12 UN-2B	-	96	19	41	1,5
	25	Ø 24	1 5/16 - 12 UN-2B	-	114	19	46	2
	32	Ø 32	1 5/8 - 12 UN-2B	-	110	19	60	3,8
	40	Ø 38	1 7/8 - 12 UN-2B	-	117	19	70	6,1
	50	Ø 48	2 1/2 - 12 UN-2B	-	140	19	80	9,1

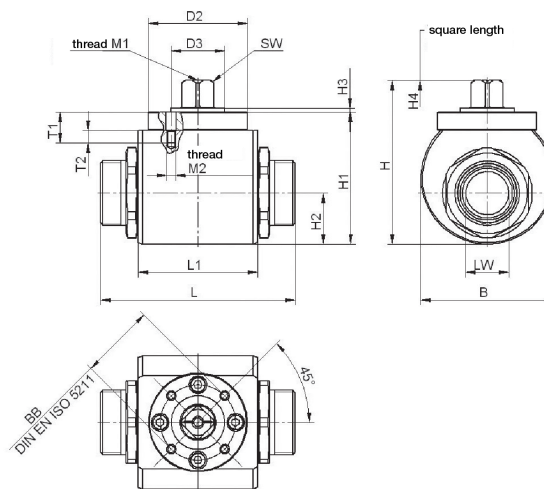
Special connections with imperial male thread, metric female or male threads, as well as bulkhead connections on request!

## BODY DIMENSIONS WITH COVER

Cover for handle mounting (DfG)



Cover for actuator mounting (DfA)



DN	LW	PN <sup>1)</sup>	L1	B	H	H1	H2	H4	SW	M1	D2	T1	T2	M2	BB	D3	H3	S	
mm	mm	bar	mm	mm	mm	mm	mm	mm	mm		mm	mm	mm		ISO	mm	mm	mm	
10	Ø 10	400	43,2	Ø 50	56,5	45,8	17,5	10,3	9	M5	Ø 50	12	6	M5	F03	Ø 36	Ø 25	2	3
13	Ø 13	400	48,2	Ø 55	60,5	49,8	20,5	10,3	9	M5	Ø 50	12	6	M5	F03	Ø 36	Ø 25	2	3
16	Ø 15	400	48,2	Ø 60	68,1	55,3	21,5	12,3	12	M6	Ø 50	13	6,5	M5	F03	Ø 36	Ø 25	2	3,5
20	Ø 20	400	62,2	Ø 70	87,3	69,8	27	15	14	M6	Ø 55	17,3	7	M5	F04	Ø 42	Ø 30	2	4
25	Ø 24	400	66,2	Ø 75	91,6	74,1	29	15	14	M6	Ø 55	17,3	7	M5	F04	Ø 42	Ø 30	2	4
32	Ø 32	400	81,6	Ø 95	119,3	98,3	39,5	18,5	17	M8	Ø 65	20,6	8	M6	F05	Ø 50	Ø 35	2	5
40	Ø 38	400	86,6	Ø 105	129,8	108,8	45,5	18,5	17	M8	Ø 65	20,6	8	M6	F05	Ø 50	Ø 35	2	5
50	Ø 47.5	400	101,6	Ø 120	145,8	124,8	54	18,5	17	M8	Ø 65	20,6	8	M6	F05	Ø 50	Ø 35	2	5

<sup>1)</sup> For PN max. and tightening torque see data of the compression fitting manufacturer.

- Reduced press. rating must be taken into consideration acc. to application and materials.
- Dimensions subject to change without notice.

### Order Example

Series	Connection	Normal Size	Pressure	Material	Equipment/Specials/Mounting see category equipment
FE2	N	1/2	PN500	SS	DfG for handle mounting
FE2	N	1/2	PN500	SS	DfA for actuator mounting