

VSB SERIES













INTERCHANGE > Similar Couplings



Stucchi®

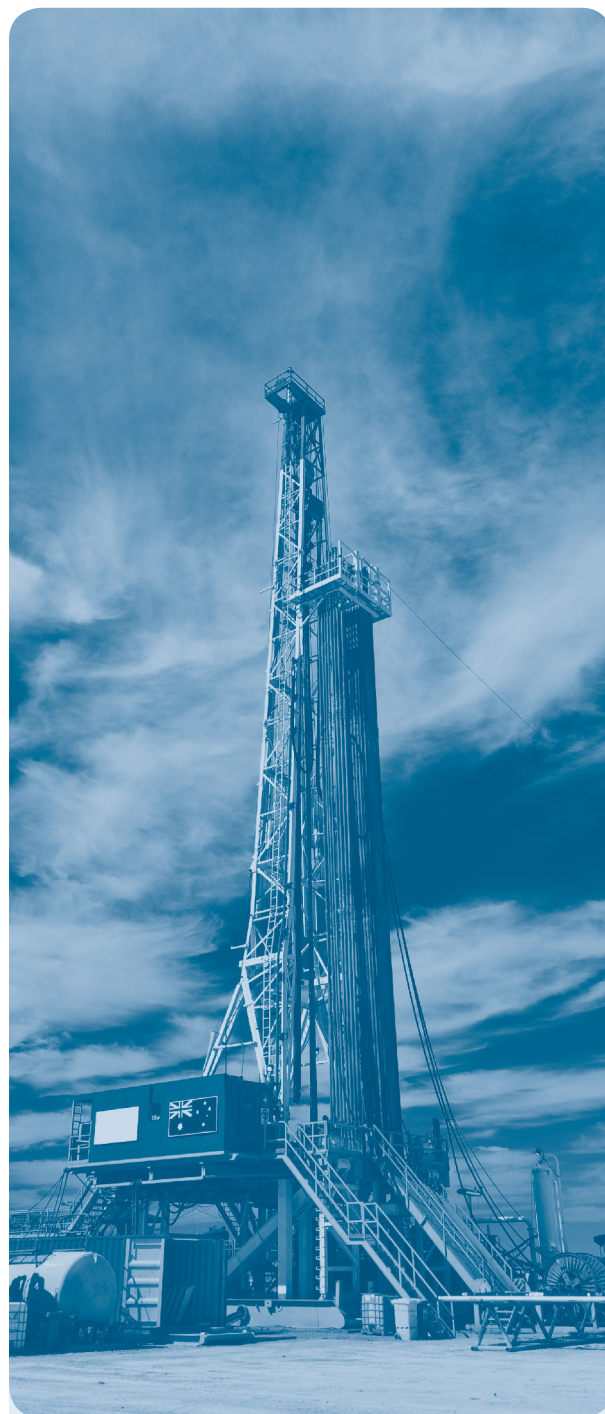


TECHNICAL FEATURES AND OPTIONS

	Interchange Similar Couplings		Sealing description Nitrile NBR		Connection system Screw
	Available sizes From 1/2" to 1-1/2"		Material Brass (body) Steel (wing nut)		Available threads
	Operating pressure Up to 200 bar		Locking mechanism Screw to connect		Flow rate Up to 300 L/Min
	Temperature (°C) -20° / +100°		Valving style Poppet		Connection under pressure Connection: not allowed Disconnection: not allowed

BENEFITS

- The VSB series is a brass screw together coupling available in sizes 1/2" to 1-1/2".
- Suitable for transfer applications where the mechanical advantage of the screw thread is required.
- Compatible Parker 6100, Faster FB, Eaton 5100, Hansen 96, Safeway S51, Snap-Tite 78.
- Brass body with steel wing nut.
- Nitrile seal as standard.
- Screw together design.
- High strength.
- Interchangeable with similar couplings.



MAIN APPLICATIONS



Agriculture



Oil & Gas



Industry



High Pressure



Cooling



Refrigeration



Earth Moving



Vehicles

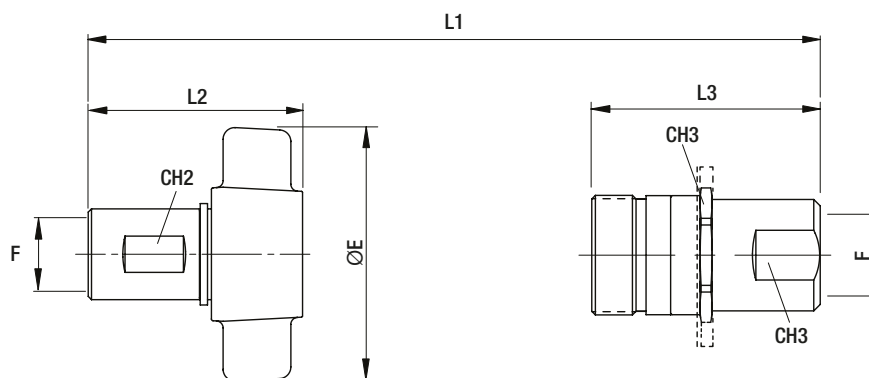


Hydraulic Equipment

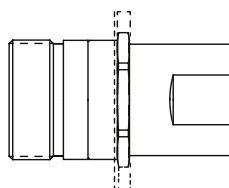
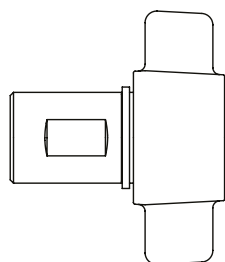


Chemical & Food Industry

PERFORMANCES



VSB Series	Coupling size	CH2	CH3	ØE	L1	L2	L3	Max Pressure Connected	Rated Flow
	Inch	mm	mm	mm	mm	mm	mm	bar	l/m
VSB34	3/4	29	34	103	132	78	79.15	200	62
VSB100	1	37	40	112	152	93	89.90	200	160
VSB114	1-1/4	45	48	132	160	101	94.00	180	220
VSB112	1-1/2	51	63.5	135	165	102	104.50	170	300



Thread (F)	Coupling Size	Descriptive Code	Stock Code	Descriptive Code	Stock Code
1/2 NPT	-12	F-VSB34 12 NPT	S	M-VSB34 12 NPT	S
3/4 NPT	-12	F-VSB34 NPT	S	M-VSB34 NPT	S
1 NPT	-16	F-VSB100 NPT	S	M-VSB100 NPT	S
1-1/4 NPT	-20	F-VSB114 NPT	S	M-VSB114 NPT	S
1-1/2 NPT	-24	F-VSB112 NPT	S	M-VSB112 NPT	S