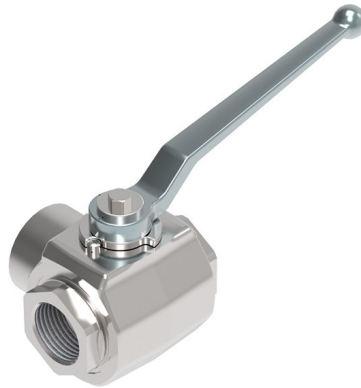


# FB3SERIES

THREE WAY FORGED BALL VALVE



## STANDARD FB3

The sealing function of FE3 and FB3 valves is only given when the pressure standing on the closed port is zero or if the pressure between the connected ports is higher than the pressure on the closed port. No shut-off position for third port is possible! To apply pressure from all ports, a special variant is required.

### Connector:

Compression fitting light and heavy series, BSP thread, NPT thread, UNC/UNF female thread, bulkhead connection, thread connection.

### Dimensions: DN20 to DN50

**Body:** S355

**Ball + stem:** free cutting steel, stainless steel (1.4571/316Ti)

**Sealing:** plastics

### Adapter:

BSP thread, NPT thread, compression fitting light and heavy series, UNC/UNF female thread, bulkhead connection

### Pressure range:

up to PN400 (note table of dimensions)

### Field of application:

hydraulics, particularly in construction industry and agricultural machinery, mining industry (**Material of seals and body adapted to application!**)

### Temperature range:

standard: -20°C to +80°C (-4 to +176°F)

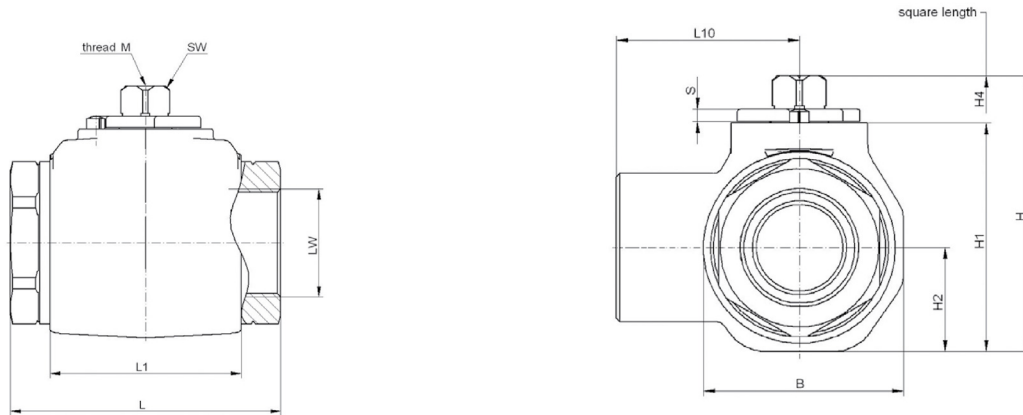
### Surface:

black oxide finishing, zinc-layer, zinc nickel

### Special equipment on request!

- locking device
- actuators
- position switches
- detent kits
- special materials




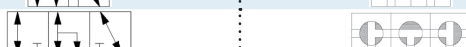
## BODY DIMENSIONS WITHOUT COVER



### Three-way diverter forged ball valve

DN	LW	PN <sup>1)</sup>	L1	B	H	H1	H2	H4	SW	M	S
mm	mm	bar	mm	mm	mm	mm	mm	mm	mm		mm
20	Ø 20	350	61	49	73	57	24,5	16	14	M6	4
25	Ø 24	350	65	60	76	60	26,5	16	14	M6	4
32	Ø 32	350	80	76	104	84	38	18,5	17	M8	5
40	Ø 38	350	85	83	111	92	41,5	18,5	17	M8	5
50	Ø 47,5	350	100	100	130	111	50	18,5	17	M8	5

- 1) • For PN max. and tightening torque see data of the compression fitting manufacturer.
- Other face to face dimensions on request.
- Reduced press. rating must be taken into consideration acc. to application and materials.
- Dimensions subject to change without notice.

Order No.	Design	Operation (Overlap)	Operation symbols
L	L-bore	0° - 90° (negativ)	
P <sup>1)2)</sup>	L-positive-bore	0° - 90° - 180° (positiv)	
T	T-bore	0° - 90° (negativ)	
T180° 2)	T-bore	0° - 90° - 180° (negativ)	

- 1) In middle position (90°) only pressurizing of third port possible.
- 2) For middle position detent kit recommended.

FB3 ball valves are normally outlet sealed. This means, the closed side is only sealed when there is no or less pressure than at the inlet port. A bi-directional sealing system is available on request. With this system the closed port is still sealed even if there is a higher pressure than at the inlet port. Both types can only be used with the middle port as entry! Please note the bi-directional sealing system with your order (e.g. LA, PA, TA or TA180°)! The bi-directional sealing system can be damaged by pulsating pressure!

### Order Example

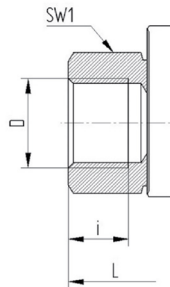
Series	Connection <sup>2)</sup>	Normal Size	Porting diagram	Pressure	Material <sup>3)</sup>	Equipment/Specials/Mounting see category equipment
FB3	G	1/2	L	PN350	CS	

Please send your request to: [info@stucchiaustralia.com](mailto:info@stucchiaustralia.com)  
Please tell us pressure, temperature and medium of your application!

## SCREW SOCKETS FOR FB3

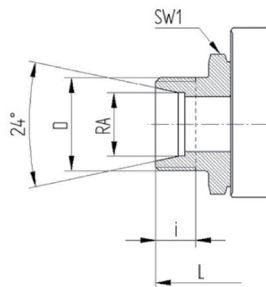
### Connection

**BSP female thread**  
DIN/ISO 228  
Connection Type: G



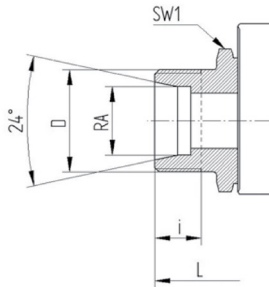
DN	LW	Scw size order code	Scw size for DIN2353	L	L10	i	SW1	Weight
mm	mm		mm	mm	mm	mm	mm	kg
20	∅ 18	G 3/4	-	96	47	16	41	1,55
25	∅ 22	G 1	-	113	55	18	46	2,1
32	∅ 30	G 1 1/4	-	110	70	20	60	3,4
40	∅ 35	G 1 1/2	-	120	74	22	70	4,2
50	∅ 44	G 2	-	140	85	24	85	6,1

**For compression fitting, light series**  
DIN 2353 L  
Connection Type: L



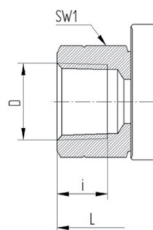
20	∅ 18	22L	M 30x2	102	47	12	41	1,6
25	∅ 22	28L	M 36x2	108	55	12	46	2,1
32	∅ 30	35L	M 45x2	128	69	13,5	60	3,2
40	∅ 35	42L	M 52x2	133	74	13,5	70	4

**For compression fitting, heavy series**  
DIN 2353 S  
Connection Type: S



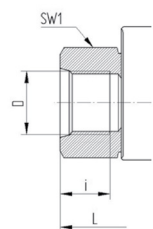
20	∅ 18	25S	M 36x2	110	47	15	41	1,6
25	∅ 22	30S	M 45x2	120	55	17	46	2,1
32	∅ 30	38S	M 52x2	140	74	19	50	3,2

**NPT female thread**  
ANSI B 1.20.1  
Connection Type: N



32	∅ 30	1 1/4 NPT	-	115	70	19,5	60	3,4
40	∅ 35	1 1/2 NPT	-	135	75	19,5	70	4,2
50	∅ 44	2 NPT	-	140	85	20	85	6,2

**UN/UNF female thread**  
SAE J514  
Connection Type: SAE



32	∅ 32	1 5/8-12 UN-2B	-	110	70	19	60	3,4
40	∅ 24	1 7/8-12 UN-2B	-	117	74	19	70	4,2
50	∅ 48	2 1/2-12 UN-2B	-	140	85	19	80	6,1

Special connections with imperial male thread, metric female or male threads, as well as bulkhead connections on request!