

FB2SERIES

FORGED BALL VALVE



STANDARD FB2

Ball valves for different fields of application like construction machinery, agricultural machinery, mobile hydraulics, mining industry, gas-industry. Available from DN04, preferable DN32 to DN50. With different connectors. Modifications: with actuator and position switch, as combination, with locking device.

Connector:

Compression fitting light and heavy series, BSP thread, NPT thread, UNC/UNF female thread.

Dimensions DN04 to DN50:

Body: S355

Ball + stem: free cutting steel, stainless steel (1.4571/316Ti)

Sealing: plastics, metal

Adapter:

BSP thread, NPT thread, compression fitting light and heavy series, UNC/UNF female thread

Pressure range:

up to PN500 (note table of dimensions)

Field of application:

hydraulics, paint industries, steam, thermo oil, industrial plants, ship building, paper industry
(Coating seals and body materials adapted to application!)

Temperature range:

standard: -20°C to +80°C (-4 to +176°F)

Surface:

black oxide finishing, zinc-layer, zinc nickel

Special equipment on request!

- locking device
- actuators
- position switches
- detent kits
- special materials

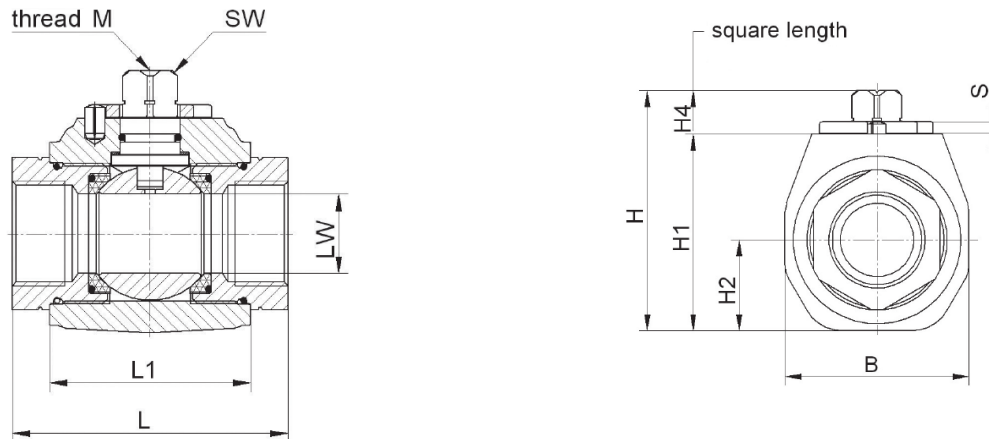
FB2 with locking device



FB2 with position switch



BODY DIMENSIONS



DN ²	LW	PN ¹⁾	L1	B	H	H1	H2	H4	SW	M	S
mm	mm	bar	mm	mm	mm	mm	mm	mm	mm		mm
4	Ø 5	500	35	33	49,4	38	18,8	9	11	M5	3
6	Ø 6	500	35	33	49,4	38	18,8	9	11	M5	3
8	Ø 8	500	35	33	49,4	38	18,8	9	11	M5	3
10	Ø 10	400	42	35	49,2	38	16,3	9	10,9	M5	3
13	Ø 13	400	47	38	51,2	40	17,3	9	10,9	M5	3
16	Ø 15	400	48,2	50 ²⁾	62,5	46,3	19	12	15,5	M6	3.5
20	Ø 20	400	61	63 ²⁾	77,2	60,8	28,5	14	16	M6	4
25	Ø 24	400	66,2	68 ²⁾	80,7	64,3	29,5	14	16	M6	4
32	Ø 32	400	80	80	104,4	85,4	39,5	17	18,5	M8	5
40	Ø 38 ³⁾	400	85	84	111,4	92,4	42	17	18,5	M8	5
50	Ø 47,5	400	100	104	129	110	52	17	18,5	M8	5

- ¹⁾ • For PN max. and tightening torque see data of the compression fitting manufacturer.
 • Reduced press. rating must be taken into consideration acc. to application and materials.
 • Dimensions subject to change without notice.
- ²⁾ • Round body possible.

Order Example

Series	Connection ⁴⁾	Normal Size	Pressure	Equipment/Specials/Mounting see category equipment
FB2	G	1/2	PN400	LS

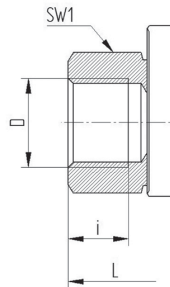
⁴⁾ left and right side connectors can be used in any combination

You can reach us by email: info@stucchiaustralia.com
 Please tell us pressure, temperature and medium of your application!

SCREW SOCKETS FOR FB2

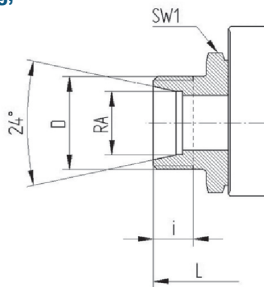
Connection

BSP female thread
DIN/ISO 228
Connection Type: G



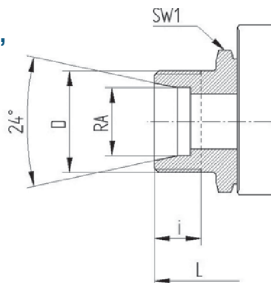
DN	LW	Scew size order code	Scew size for DIN2353	L	i	SW1	Weight
mm	mm		mm	mm	mm	mm	kg
4	∅ 5	G 1/8	-	69	8	22	0,35
6	∅ 6	G 1/4	-	69	12	22	0,35
10	∅ 8	G 3/8	-	69	12	22	0,35
10	∅ 10	G 3/8	-	73	12	27	0,5
13	∅ 13	G 1/2	-	85	14	30	0,65
20	∅ 20	G 3/4	-	96	16	41	1,5
25	∅ 24	G 1	-	113	18	46	2
32	∅ 24	G 1 1/4	-	121	20	50	2,1
40	∅ 24	G 1 1/2	-	124	22	55	2,1
32	∅ 32	G 1 1/4	-	110	20	60	3,2
40	∅ 32	G 1 1/2	-	135	22	60	3,2
40	∅ 38	G 1 1/2	-	120	22	70	4
50	∅ 38	G 2	-	147	24	75	4,7
50	∅ 48	G 2	-	140	24	85	5,9

For compression fitting, light series
DIN 2353 L
Connection Type: L



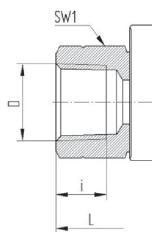
4	∅ 5	6L	M 12x1,5	67	7,5	22	0,3
6	∅ 6	8L	M 14x1,5	67	7,5	22	0,3
8	∅ 8	10L	M 16x1,5	71	8,5	22	0,3
10	∅ 8	12L	M 18x1,5	71	8,5	22	0,3
10	∅ 10	12L	M 18x1,5	75	8,5	27	0,5
13	∅ 10	15L	M 22x1,5	77	9,5	27	0,5
13	∅ 13	15L	M 22x1,5	84	9,5	30	0,6
16	∅ 13	18L	M 26x1,5	84	9,5	30	0,6
20	∅ 20	22L	M 30x2	102	12	41	1,5
25	∅ 24	28L	M 36x2	108	12	46	2
32	∅ 24	35L	M 45x2	114	13,5	50	2,1
40	∅ 24	42L	M 52x2	114	13,5	55	2,2
32	∅ 32	35L	M 45x2	128	13,5	60	3
40	∅ 32	42L	M 52x2	128	13,5	60	3
40	∅ 38	42L	M 52x2	133	13,5	70	3,8

For compression fitting, heavy series
DIN 2353 S
Connection Type: S



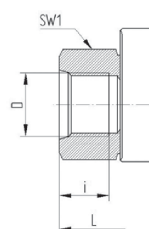
4	∅ 5	8S	M 16x1,5	73	9,5	22	0,35
6	∅ 6	10S	M 18x1,5	73	9,5	22	0,35
8	∅ 8	12S	M 20x1,5	77	9,5	22	0,35
10	∅ 10	14S	M 22x1,5	84	11,5	27	0,5
13	∅ 13	16S	M 24x1,5	87	11,5	30	0,6
16	∅ 13	20S	M 30x2	91	13,5	30	0,65
20	∅ 20	25S	M 36x2	110	15	41	1,5
25	∅ 24	30S	M 42x2	120	17	46	2,1
32	∅ 24	38S	M 52x2	125	19	55	2,3
32	∅ 32	38S	M 52x2	140	19	60	3,1

NPT female thread
ANSI B 1.20.1
Connection Type: N



4	∅ 5	1/8 NPT	-	69	8	22	0,35
6	∅ 6	1/4 NPT	-	69	11,5	22	0,35
10	∅ 10	3/8 NPT	-	73	12	27	0,5
13	∅ 13	1/2 NPT	-	92	15,5	30	0,65
20	∅ 20	3/4 NPT	-	97	16	41	1,5
25	∅ 24	1 NPT	-	113	19	46	2
32	∅ 24	5/4 NPT	-	131	19,5	50	2,1
40	∅ 24	1 1/2 NPT	-	139	19,5	55	2,3
32	∅ 32	1 1/4 NPT	-	115	19,5	60	3,2
40	∅ 38	1 1/2 NPT	-	135	19,5	70	4
50	∅ 48	2 NPT	-	140	20	85	5,9

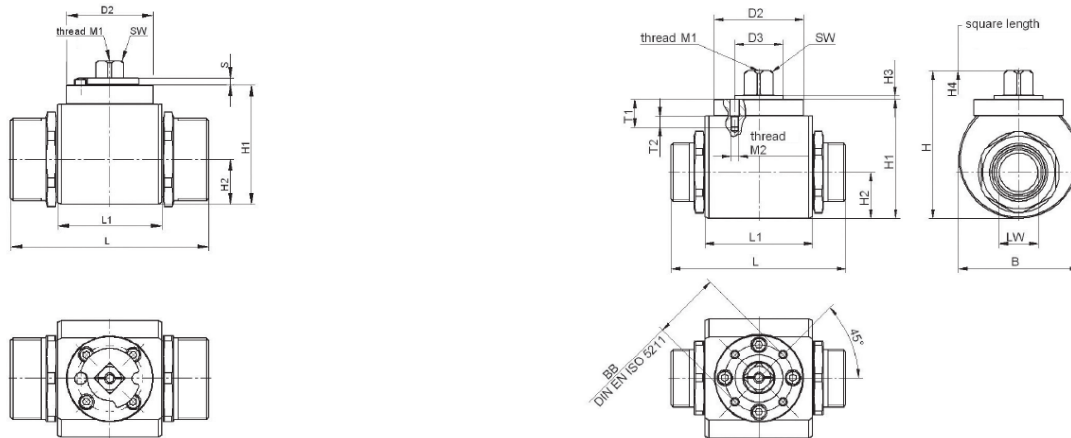
UN/UNF female thread
SAE J514
Connection Type: SAE



6	∅ 6	7/16-20 UNF-2B	-	69	11,5	22	0,35
10	∅ 9	9/16-18 UNF-2B	-	75	12,7	27	0,5
13	∅ 11,5	3/4-16 UNF-2B	-	85	14,3	30	0,65
20	∅ 18	1 1/16-12 UN-2B	-	96	19	41	1,5
25	∅ 22	1 5/16-12 UN-2B	-	114	19	46	2
32	∅ 30	1 5/8-12 UN-2B	-	122	19	50	2,2
40	∅ 35	1 7/8-12 UN-2B	-	128	19	60	2,4
50	∅ 44	2 1/2 - 12 UN-2B	-	140	19	80	5,9

Special connections with imperial male thread, metric female or male threads, as well as bulkhead connections on request!

BODY DIMENSIONS WITH COVER



DN ²	LW	PN ¹⁾	L1	B	H	H1	H2	H4	SW	M1	D2	T1	T2	M2	BB	D3	H3	S	
mm	mm	bar	mm	mm	mm	mm	mm	mm	mm		mm	mm	mm		ISO	mm	mm	mm	
10	Ø 10	400	43,2	49,5	56,2	45,5	17,3	10,3	9	M5	Ø 49	12	6	M5	F03	Ø 36	Ø 25	2	3
13	Ø 13	400	48,2	54	60	49,3	20	10,3	9	M5	Ø 49	12	6	M5	F03	Ø 36	Ø 25	2	3
16	Ø 15	400	48,2	59	67,6	54,8	21	12,3	12	M6	Ø 49	13	6,5	M5	F03	Ø 36	Ø 25	2	3,5
20	Ø 20	400	62,2	69	86,8	69,3	26,5	15	14	M6	Ø 55	17,3	7	M5	F04	Ø 42	Ø 30	2	4
25	Ø 24	400	66,2	74	91,1	73,6	28,5	15	14	M6	Ø 55	17,3	7	M5	F04	Ø 42	Ø 30	2	4
32	Ø 32	400	80	80	119,3	98,3	39,5	18,5	17	M8	Ø 64,5	20,6	8	M6	F05	Ø 50	Ø 35	2	5
40	Ø 38	400	85	84	126,3	105,3	42	18,5	17	M8	Ø 64,5	20,6	8	M6	F05	Ø 50	Ø 35	2	5
50	Ø 7.5	400	100	104	143,8	122,8	52	18,5	17	M8	Ø 64,5	20,6	8	M6	F05	Ø 50	Ø 35	2	5

- 1) • For PN max. and tightening torque see data of the compression fitting manufacturer.
 • Reduced press. rating must be taken into consideration acc. to application and materials.
 • Dimensions subject to change without notice.
- 2) • Round body possible.

For hydraulic oil: actuator mounting without cover!

Order Example

Series 050	Connection ⁴⁾	Normal Size	Pressure	Material ⁵⁾	Equipment/Specials ⁶⁾ see category equipment
FB2	G	1/2	PN400	CS	DFG (for handle mounting)
FB2	G	1/2	PN400	CS	DFA (for actuator mounting)

Ball valves with mounting plate or as combination, see chapter special types.
 Please discuss your demand with us! We are happy to help you finding the correct hole pattern and size for your application!

You can reach us by email: info@stucchiaustralia.com